



## 13 Milford Road Miranda NSW

5 2 2

A rare offering of exceptional scale and sophistication, this immaculately presented five-bedroom residence sets a new benchmark for luxurious single-level living in the heart of Miranda. Positioned on a prized 1,094sqm north-facing block and backing directly onto Miranda North Public School, this exquisite family haven has been thoughtfully designed to deliver space, style, and effortless indoor-outdoor flow across a sun-drenched, stair-free layout. Freshly painted and showcasing multiple living zones, this home effortlessly blends high-end finishes with everyday comfort. From sweeping views across Captain Cook Bridge to the beautifully manicured gardens and vast entertaining spaces, every element has been curated with lifestyle in mind.

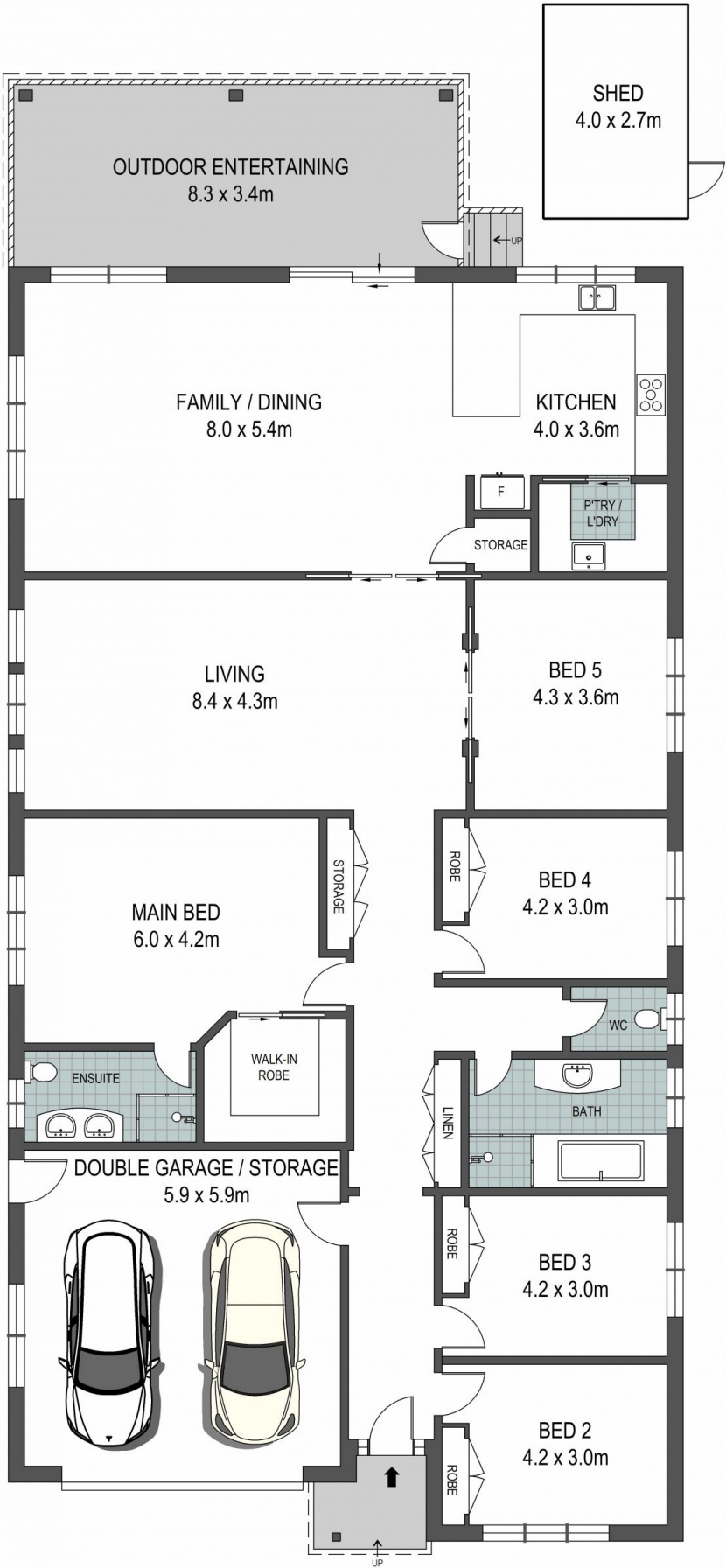
**Type** : House  
**Price** : \$ 2,410,000  
**Land Size** : 1094 sqm  
**View** : <https://www.harwoodproperty.com.au/sale/nsw/sutherland/miranda/residential/house/8341248>



**Lucas Harwood**  
0431 001 001

[For full version visit the website](https://www.harwoodproperty.com.au)

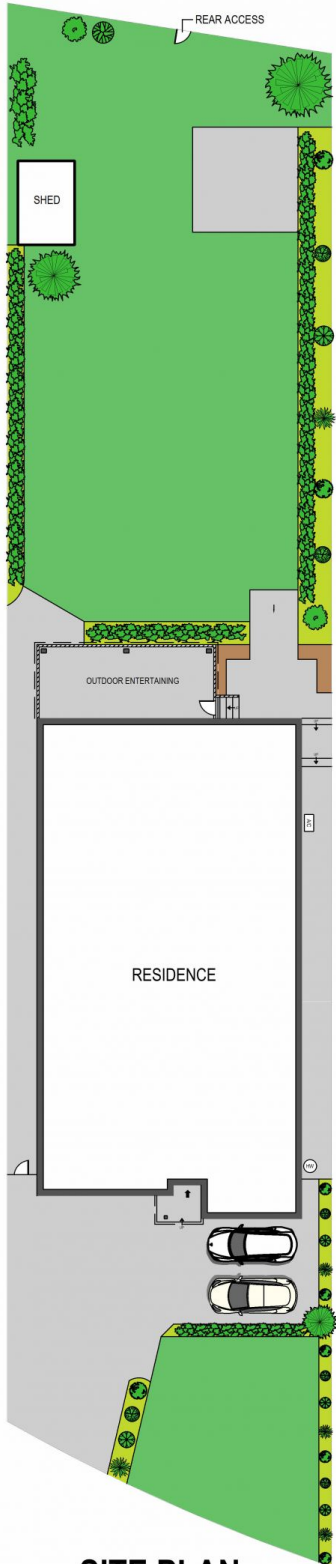
# Harwood



## GROUND FLOOR

ADDRESS:

13 Milford Road, Miranda



SITE PLAN  
(NOT TO SCALE)



DISCLAIMER: THIS IS FOR ILLUSTRATIVE PURPOSES ONLY, ALL DIMENSIONS ARE APPROXIMATE AND IT DOES NOT CONSTITUTE PART OF ANY LEGAL DOCUMENTS.