



30 Galga Street Sutherland, NSW

 5

 2

 2

Single level family home

- Impeccably crafted new construction boasting superior finishes
- Master suite complete with a walk-in robe and ensuite
- Comfortably proportioned bedrooms featuring built-in robes for ample storage
- Well-appointed kitchen with a convenient breakfast bar and a walk-in butler's pantry
- Seamlessly flowing open-plan lounge and dining area, complemented by a separate media room
- Expansive, level backyard retreat showcasing an entertainer's patio, ideal for family gatherings and outdoor enjoyment
- Two-car garage and ample off-street parking

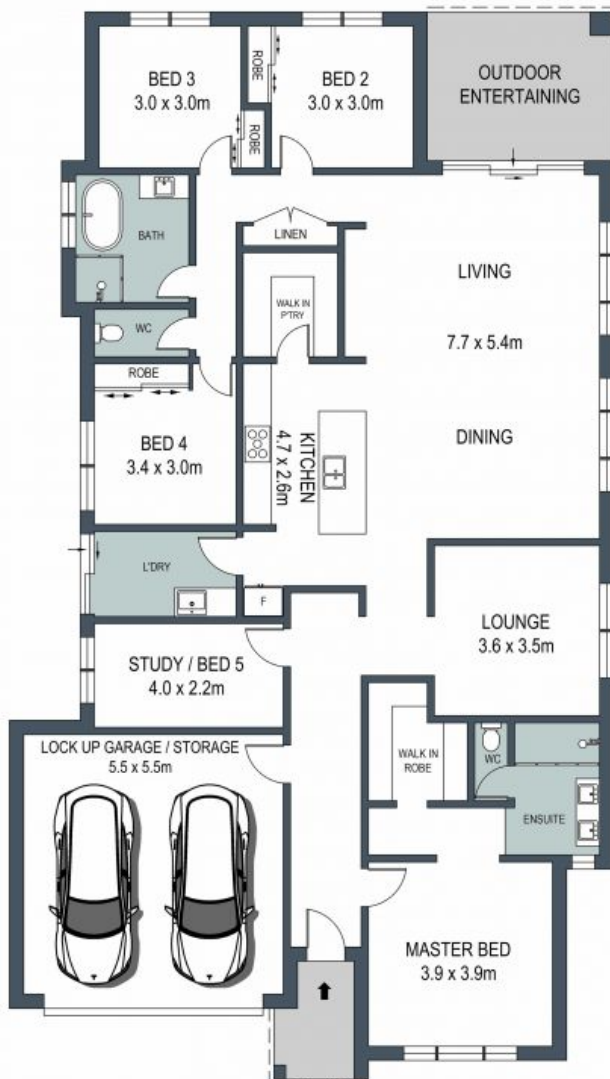
Price:

Price on request

Harwood
PROPERTY AGENTS

Lucas Harwood

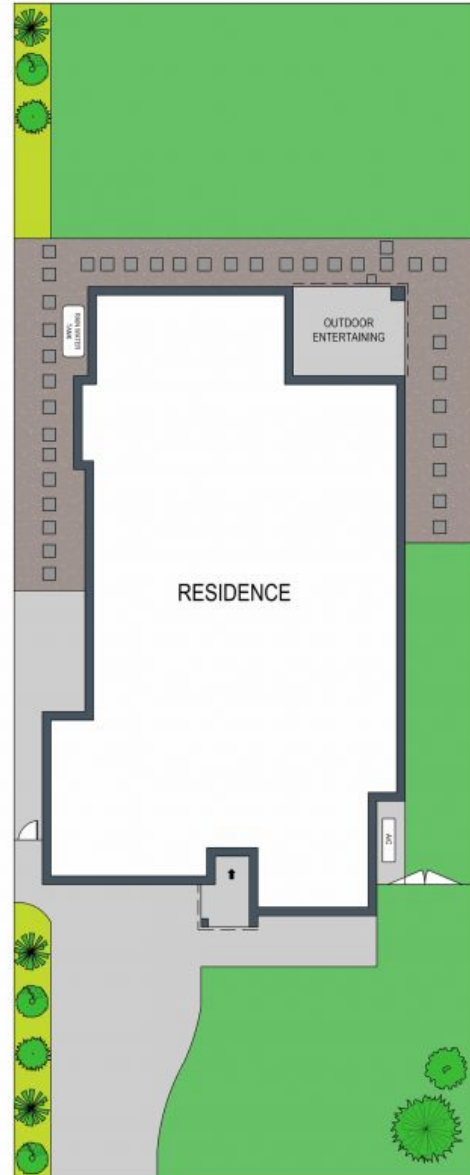
0431 001 001



GROUND FLOOR

ADDRESS:
30 Galga Street, Sutherland

DISCLAIMER: THIS IS FOR ILLUSTRATIVE PURPOSES ONLY, ALL DIMENSIONS ARE APPROXIMATE AND IT DOES NOT CONSTITUTE PART OF ANY LEGAL DOCUMENTS.



**SITE PLAN
(NOT TO SCALE)**



0 1 2 3 4 5