

43/3 Ramu Close Sylvania Waters, NSW



3



2

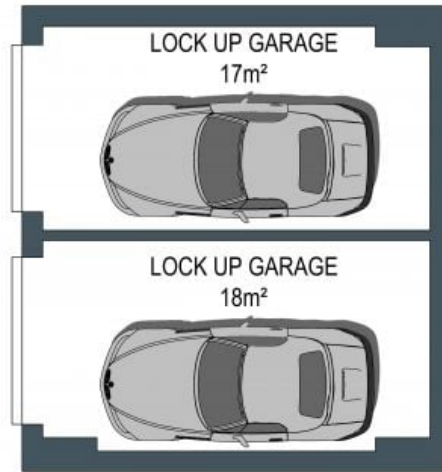


2

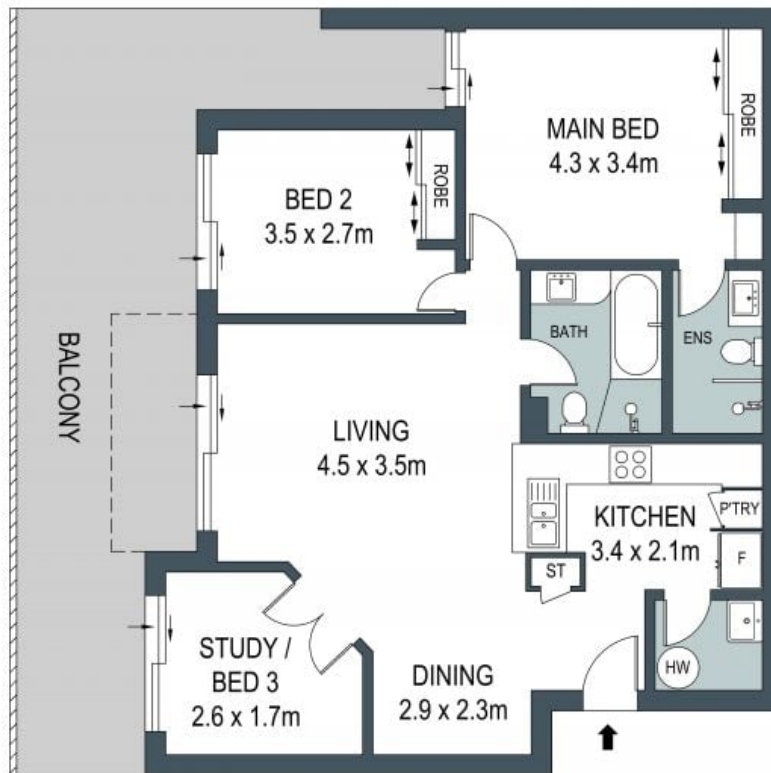
Private Outlook

- Three bedrooms/ study
- Modern bathroom with bath tub
- Master bedroom with built in robe and ensuite
- Open plan living and dining
- Modern kitchen with stone benchtops and breakfast bar
- Resort style community with swimming pool and tennis court and BBQ area
- Solid full-brick construction within a sought-after, pet-friendly complex
- Proximity to sporting fields, schools, popular local dining spots, Southgate and Westfield shopping destinations just moments away

Price: \$790000



BASEMENT LEVEL



LEVEL ONE

ADDRESS:
43 / 3 Ramu Close, Sylvania Waters

DISCLAIMER: THIS IS FOR ILLUSTRATIVE PURPOSES ONLY, ALL DIMENSIONS ARE APPROXIMATE AND IT DOES NOT CONSTITUTE PART OF ANY LEGAL DOCUMENTS.

