



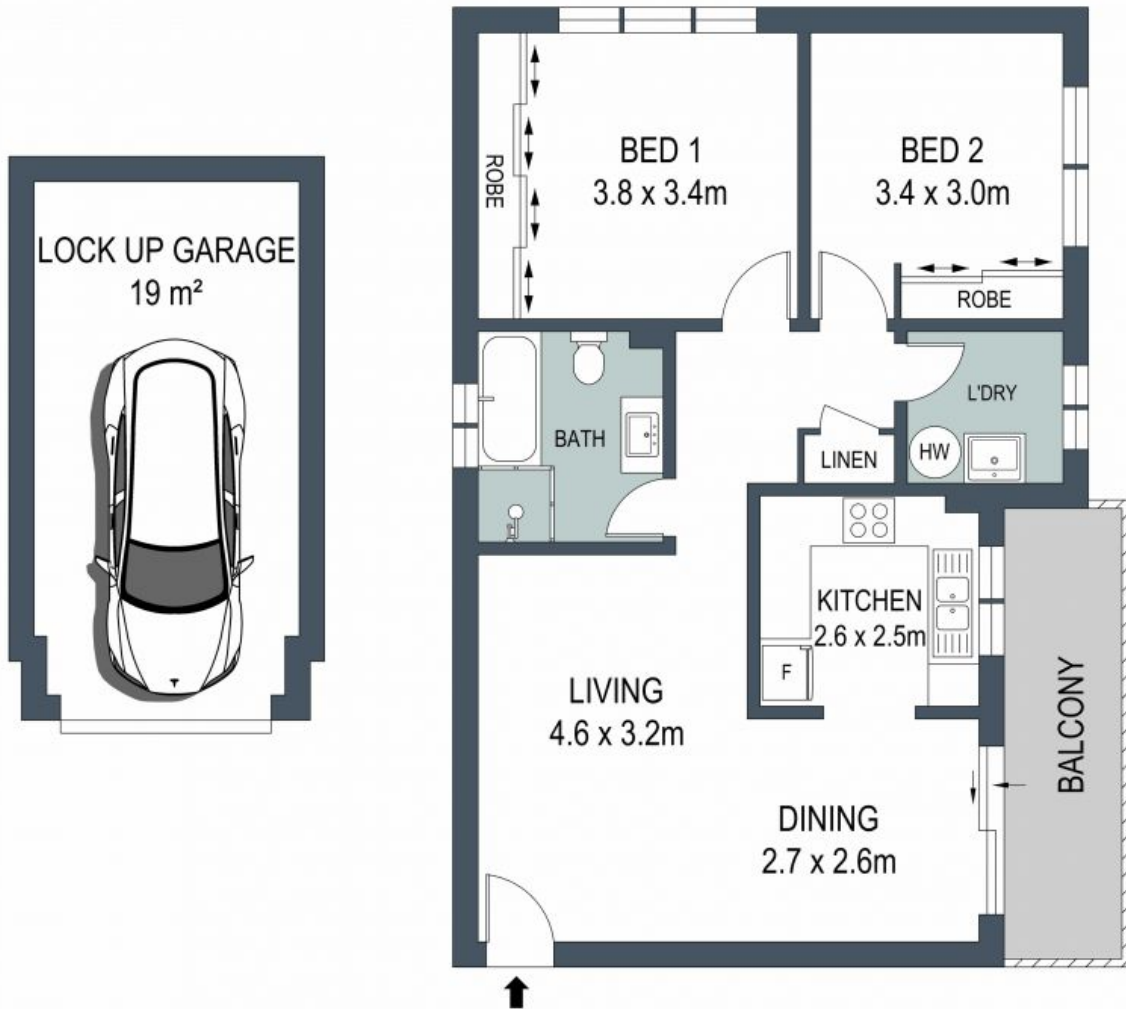
15/7-11 Miranda Road Miranda, NSW



Contemporary convenience

- Open plan living and dining that effortlessly extend onto a sunlit balcony, creating an inviting space for relaxation and entertainment
- Contemporary kitchen with stainless steel appliances
- Spacious Bedrooms boast built-in wardrobes
- Bathroom with bath tub and separate shower
- Low maintenance timber flooring throughout
- Ceiling fans, intercom security and internal laundry
- Secure single lock up garage and ample street parking for both residents and guests
- Ideally positioned approximately 750m from Westfield Miranda and the train station, this address combines serenity with urban accessibility

Price: \$655000



ADDRESS:
15 / 7-11 Miranda Road, Miranda

DISCLAIMER: THIS IS FOR ILLUSTRATIVE PURPOSES ONLY, ALL DIMENSIONS ARE APPROXIMATE AND IT DOES NOT CONSTITUTE PART OF ANY LEGAL DOCUMENTS.