



6 Meadow Place Miranda, NSW



4



2



3

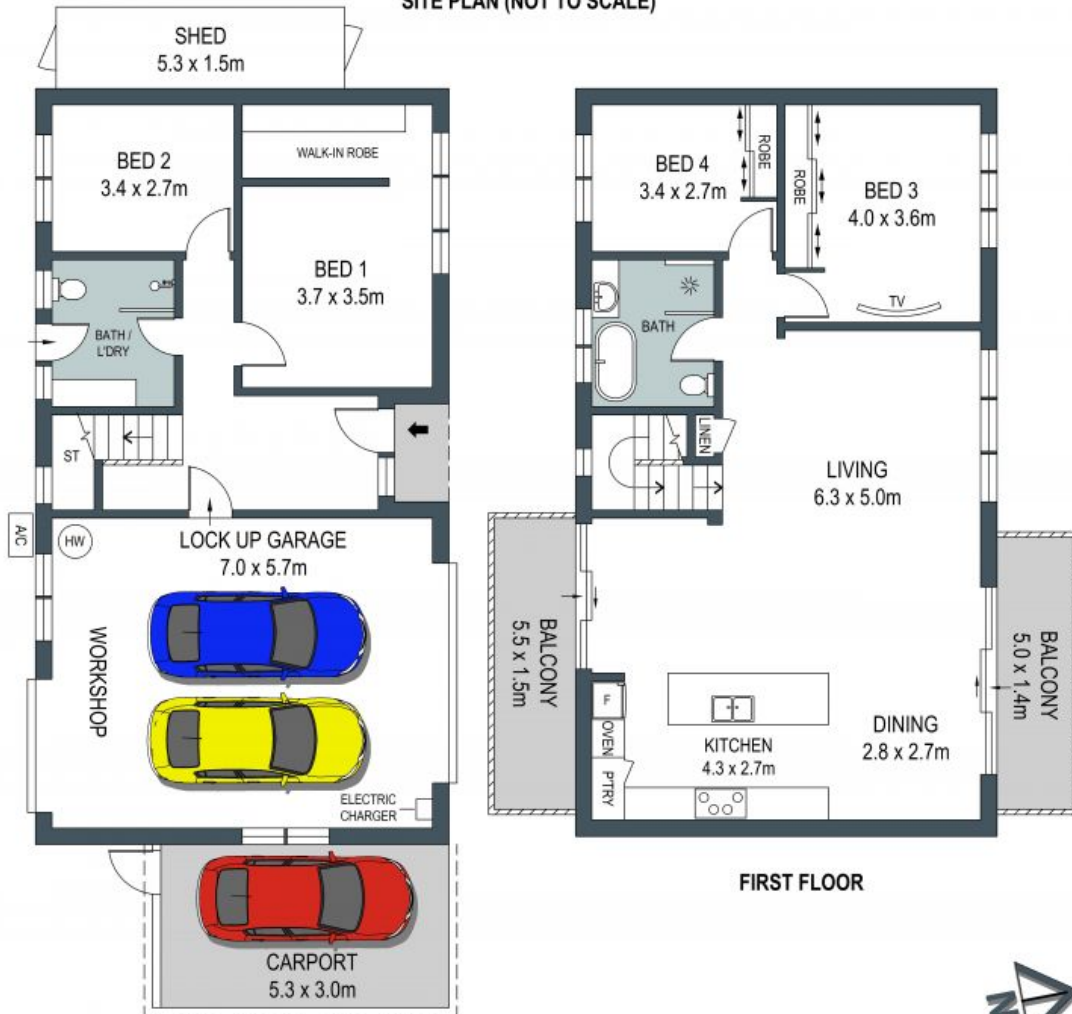
Family Entertainer

- Four bedrooms, Two bathrooms, one with a bathtub
- Sun-drenched open-plan living
- Renovated kitchen with an island bench breakfast bar
- Convenient internal laundry with rear access
- Child-friendly rear yard, ideal for entertaining
- Smart system-controlled pool and new entertainment decking area
- Original restored hardwood flooring
- Solar panels, smart home features, and an EV charger
- Double garage with storage and ample off-street parking
- Proximity to schools, shops, and parks, including walking distance to the local IGA and the bustling Westfield Miranda.

Price: Confidential



SITE PLAN (NOT TO SCALE)



ADDRESS:
6 Meadow Place, Miranda

DISCLAIMER: THIS IS FOR ILLUSTRATIVE PURPOSES ONLY, ALL DIMENSIONS ARE APPROXIMATE AND IT DOES NOT CONSTITUTE PART OF ANY LEGAL DOCUMENTS.