



9 Shirley Road Miranda, NSW



4



2



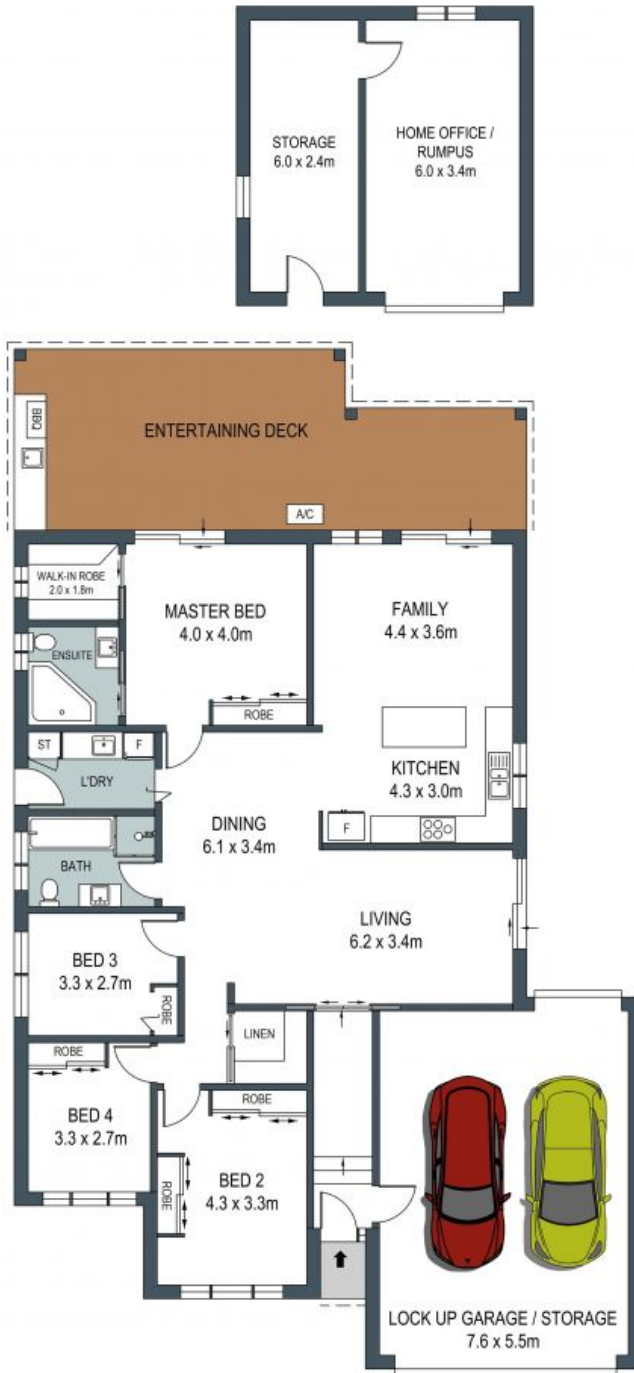
2

## Modern family home

Other good things about this house include a two-car garage, room for parking in the driveway, and it's close to shops, schools, and transportation. Plus, there's a reserve behind the house that you can easily get to through a gate.

- One-story living with 9.2kw solar panels to help save on electricity
- Bright and open living and dining areas
- Internal laundry you can get to from outside
- A modern kitchen with a gas cooking
- Master bedroom is peaceful, with its own bathroom and a big closet
- Covered area outside for entertaining and a nice space for kids to play
- An outdoor kitchen with a built-in BBQ, plumbing, and a fridge
- The backyard is great for kids, with a pool that's heated with solar power
- You can get to the reserve behind the house through a gate

**Price:** \$1905000



GROUND FLOOR



SITE PLAN (NOT TO SCALE)

ADDRESS:  
**9 Shirley Road, Miranda**

DISCLAIMER: THIS IS FOR ILLUSTRATIVE PURPOSES ONLY, ALL DIMENSIONS ARE APPROXIMATE AND IT DOES NOT CONSTITUTE PART OF ANY LEGAL DOCUMENTS.