



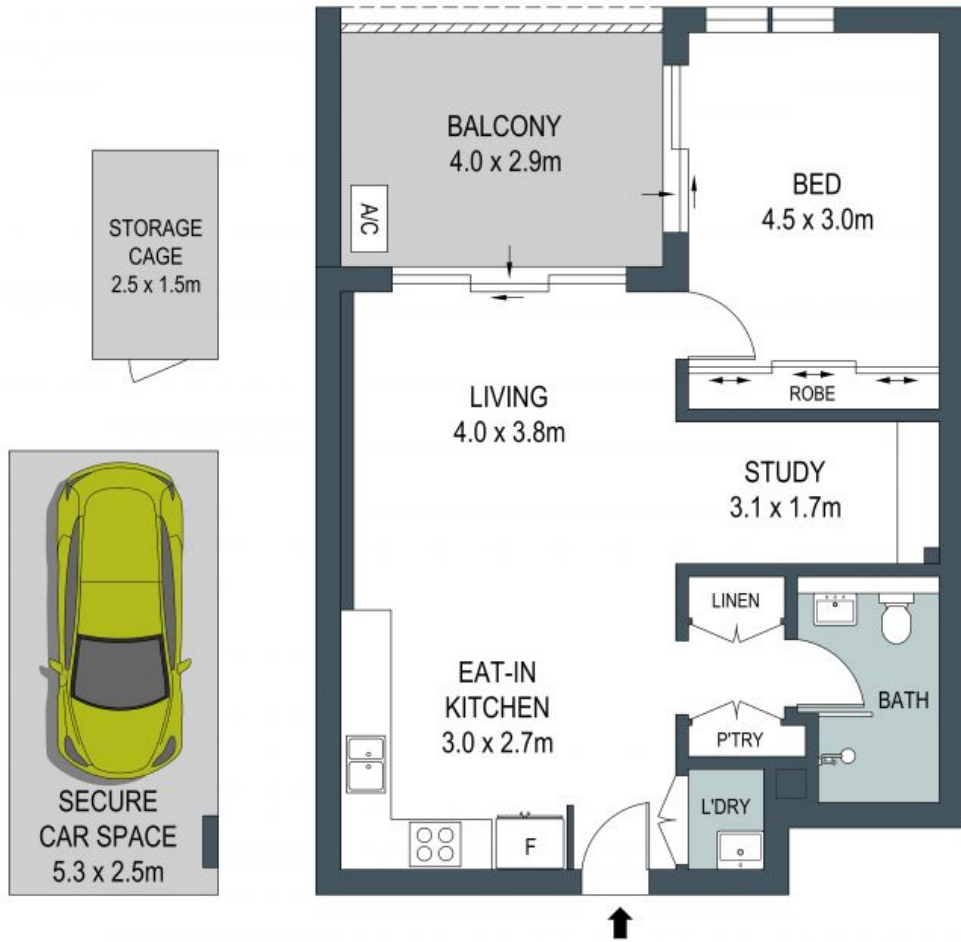
504/9 Village Place Kirrawee, NSW



Convenient Apartment

- ? Open plan, functional floorplan
- ? Entertainers balcony with bedroom access
- ? Generous bedroom and study nook
- ? Premium finishes throughout
- ? Lift access, security intercom, air-conditioning, gas heating outlet
- ? Car space, storage cage and complex outdoor common space
- ? Luxurious kitchen with stone benchtops, gas cooking, and quality stainless steel appliances
- ? A short stroll to Kirrawee train station, shops and restaurants

Price: \$645000



BASEMENT TWO

LEVEL FIVE

ADDRESS:
504 / 9 Village Place, Kirrawee

DISCLAIMER: THIS IS FOR ILLUSTRATIVE PURPOSES ONLY, ALL DIMENSIONS ARE APPROXIMATE AND IT DOES NOT CONSTITUTE PART OF ANY LEGAL DOCUMENTS.

