



140 Prince Edward Park Road Woronora, NSW



4



3



2

## Bright Family Home

- 3 spacious bedrooms, two with built in robes
- Master bedroom with an en-suite and walk-in robe
- Ducted air-conditioning for optimal comfort
- Open plan design encompassing the kitchen, living, and dining areas
- Front balcony flowing off the living area offering picturesque views and a north-facing aspect
- Double lock up garage for secure parking and workshop space
- Outdoor entertainment area
- Self-contained living area downstairs complete with its own kitchen and bathroom
- Sturdy steel frame construction complemented by brick veneer accents.

**Price:** \$1440000

**Harwood**  
PROPERTY AGENTS

**Lucas Harwood**

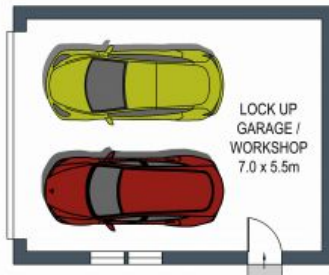
0431 001 001

**Billy Burke**

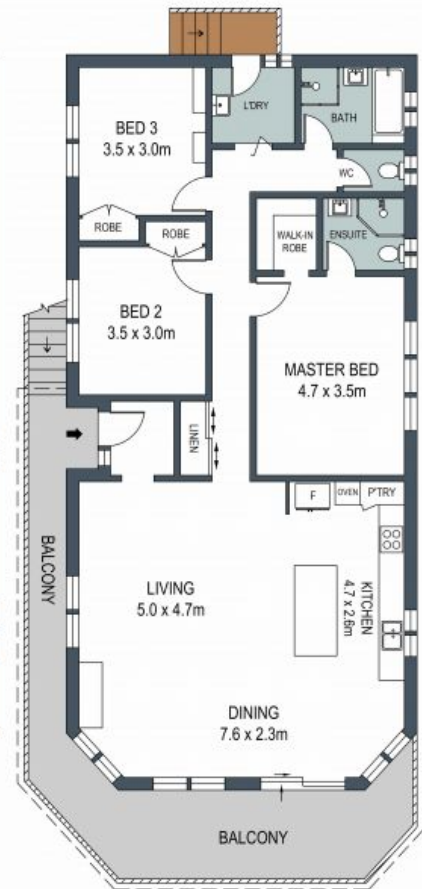
0456 678 523



**SITE PLAN (NOT TO SCALE)**



**GROUND FLOOR**



**FIRST FLOOR**

ADDRESS:  
**140 Prince Edward Park Road, Woronora**

DISCLAIMER: THIS IS FOR ILLUSTRATIVE PURPOSES ONLY, ALL DIMENSIONS ARE APPROXIMATE AND IT DOES NOT CONSTITUTE PART OF ANY LEGAL DOCUMENTS.

