



27/23-29 Willock Avenue Miranda, NSW



2



1

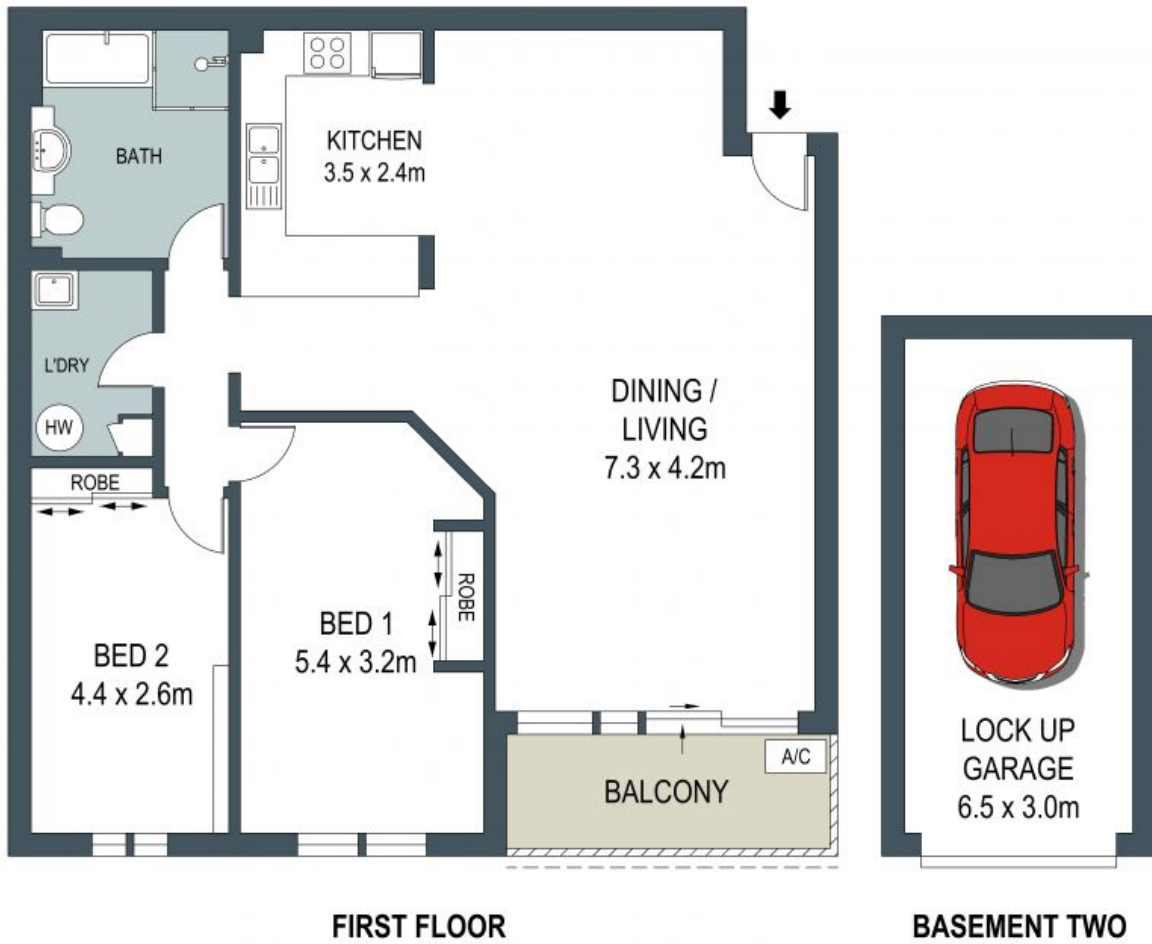


1

## Spacious Living

- Wonderful natural light and a spacious design
- Open kitchen with stainless steel appliances, dishwasher, granite benchtops
- Large bedrooms with mirrored built-in wardrobes
- Sliding door opens to balcony with room to eat and relax
- Roomy bathroom features separate bath and shower
- Dedicated laundry
- Wide plank timber floors
- Split-system air conditioning and ceiling fans for climate control
- Single lock up garage
- Strolling distance to retail, restaurants, cafes, Seymour Shaw Park, schools, childcare

**Price:** \$696000



ADDRESS:  
27/23-29 Willock Avenue, Miranda



DISCLAIMER: THIS IS FOR ILLUSTRATIVE PURPOSES ONLY, ALL DIMENSIONS ARE APPROXIMATE AND IT DOES NOT CONSTITUTE PART OF ANY LEGAL DOCUMENTS.