



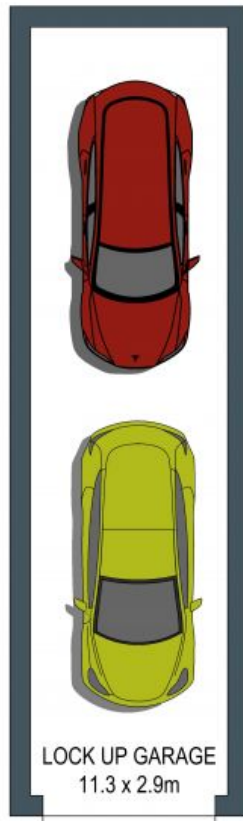
33/513-517 Kingsway Miranda, NSW



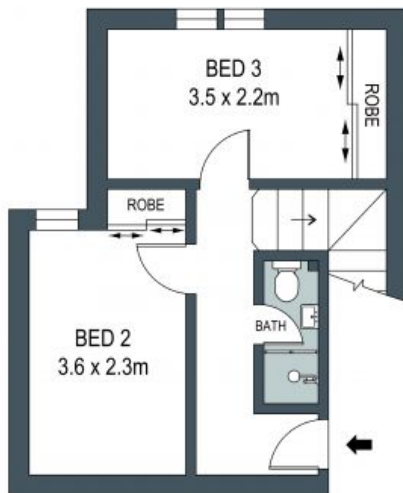
## Central Living

- Third floor setting in a secure, pet-friendly building
- Bright, roomy living and dining zone
- Granite kitchen with gas cooktop and dishwasher
- Built-in wardrobes for all bedrooms
- Ensuite for master, marble-style bathroom downstairs
- Generous laundry
- Split-system air conditioning, ceiling fans, plantation shutters
- Two balconies harness the views and provide extra space
- Motorised awning on main balcony
- Stroll to Westfield's retail, supermarkets, dining and entertainment options
- Walk to trains, parks, Sutherland Hospital, early learning centres
- Direct access to Ascot Place Reserve Park and playground
- Tandem lock up garage

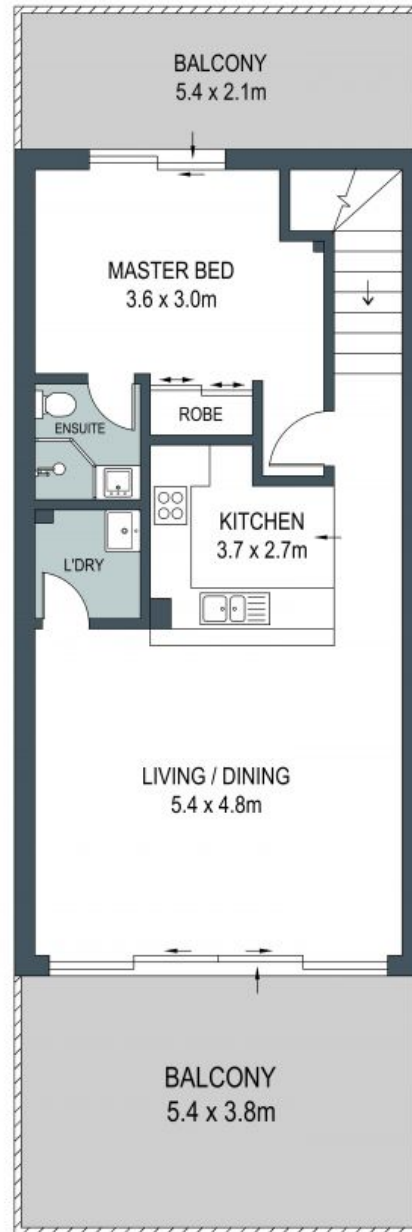
**Price:** \$880000



BASEMENT 1



THIRD FLOOR



FOURTH FLOOR

ADDRESS:  
33/513 Kingsway, Miranda

DISCLAIMER: THIS IS FOR ILLUSTRATIVE PURPOSES ONLY, ALL DIMENSIONS ARE APPROXIMATE AND IT DOES NOT CONSTITUTE PART OF ANY LEGAL DOCUMENTS.

