

Miranda, NSW



2



1

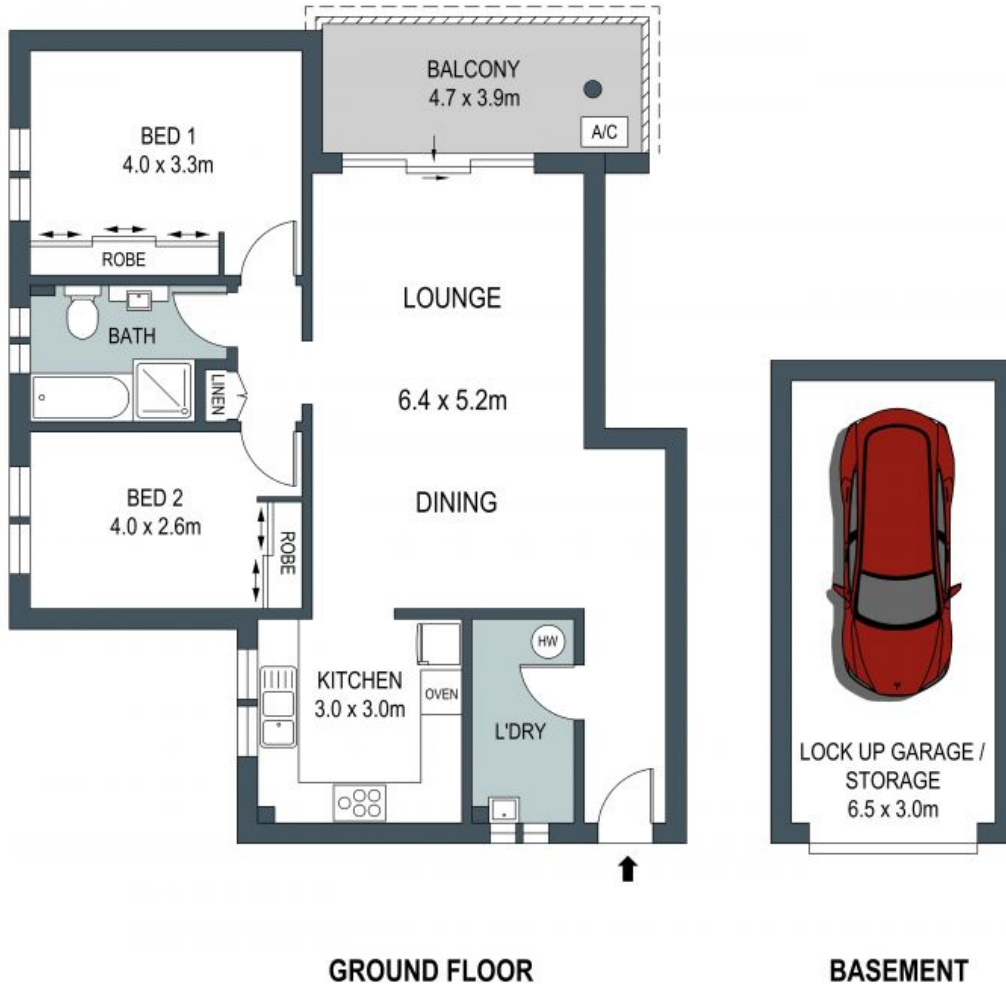


1

Garden View

- Ground floor light-filled layout extends to a sizeable balcony.
- Garden-view kitchen with stainless steel splashback, oven and dishwasher
- Large window illuminates spacious bathroom
- Well-scaled laundry with storage area
- Timber floors, split-system air conditioning, built-in wardrobes
- Secure basement garage with storage space
- 300m to Westfield, 700m to Miranda station
- Walk to dining, entertainment, childcare, Seymour Shaw Park, library, buses
- 10 minutes to Cronulla Beach

Price: \$750000



ADDRESS:
10/51-55 Miranda Road, Miranda

DISCLAIMER: THIS IS FOR ILLUSTRATIVE PURPOSES ONLY, ALL DIMENSIONS ARE APPROXIMATE AND IT DOES NOT CONSTITUTE PART OF ANY LEGAL DOCUMENTS.



Miranda, NSW