

5/231 Kingsway Caringbah, NSW



2



1

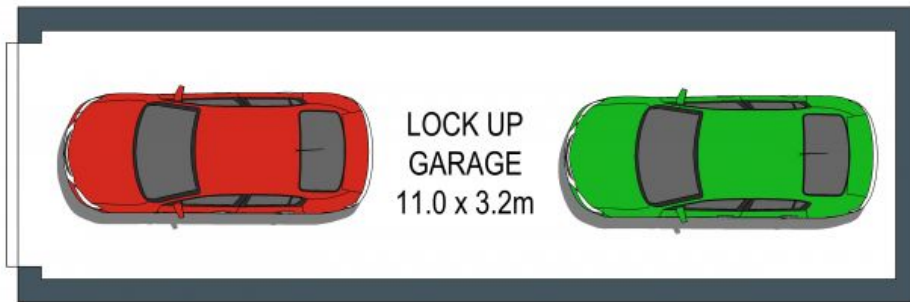


2

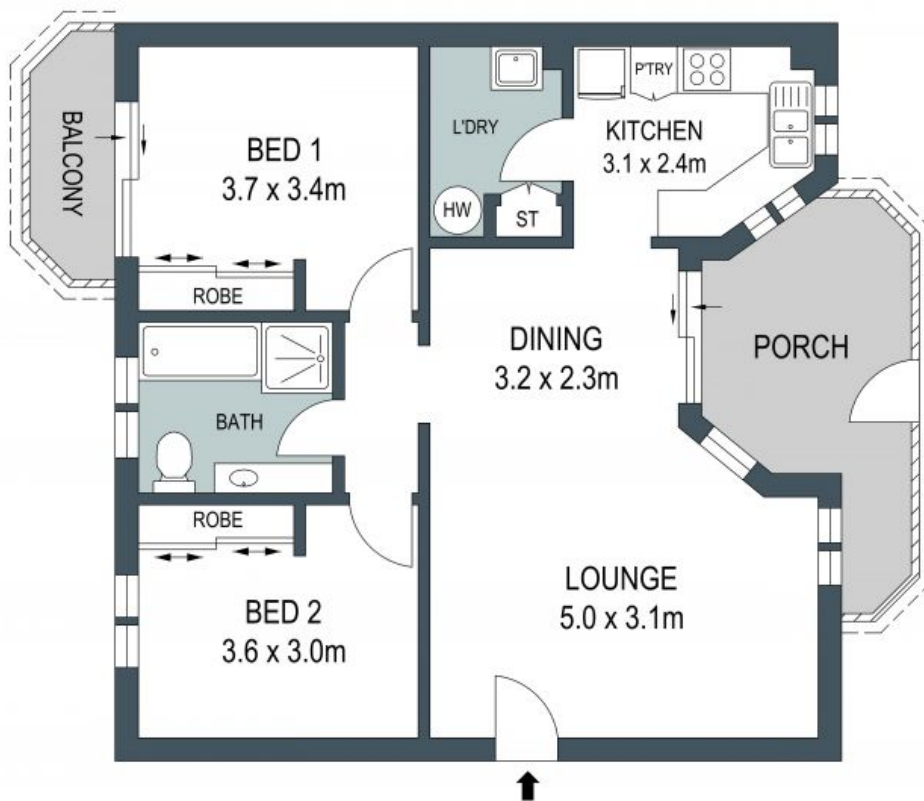
Garden View

- Secure setting in Kingsway Gardens complex
- Good market entry or investment addition
- Flexible living and dining zone
- Good sized kitchen looks to garden and features water filter, stainless steel oven and dishwasher
- Bright bathroom with separate bath and shower
- Mirrored built-in wardrobes for both bedrooms
- Split-system air conditioning, generous laundry
- Tandem garage
- Minutes to Westfield Miranda, Caringbah station, Shark Park, Caringbah Leisure Centre

Price: \$650000



LOWER GROUND FLOOR



GROUND FLOOR

ADDRESS:
5/231 Kingsway, Caringbah



DISCLAIMER: THIS IS FOR ILLUSTRATIVE PURPOSES ONLY, ALL DIMENSIONS ARE APPROXIMATE AND IT DOES NOT CONSTITUTE PART OF ANY LEGAL DOCUMENTS.