



509/1 Pinnacle Street Miranda, NSW



1



1



1

Suave Apartment

- Fifth floor of a secure building with cosmopolitan street presence
- North-rear aspect floods the balcony in sun and interior with light
- Living area and bedroom step directly out to balcony through full-height glass sliders
- Crisp white kitchen with stone benches, breakfast bar, gas stove
- Built-in wardrobe for bright bedroom
- Generous bathroom, excellent storage throughout
- Ducted air conditioner, gas connection on balcony, intercom entry, timber floors
- Solid investment or market entry offer
- Secure basement parking with storage
- Footsteps to trains, retail, dining and entertainment
- Close to beaches, hospitals, Royal National Park

Price: \$630000

Council Rates: \$353.00/year (approx)

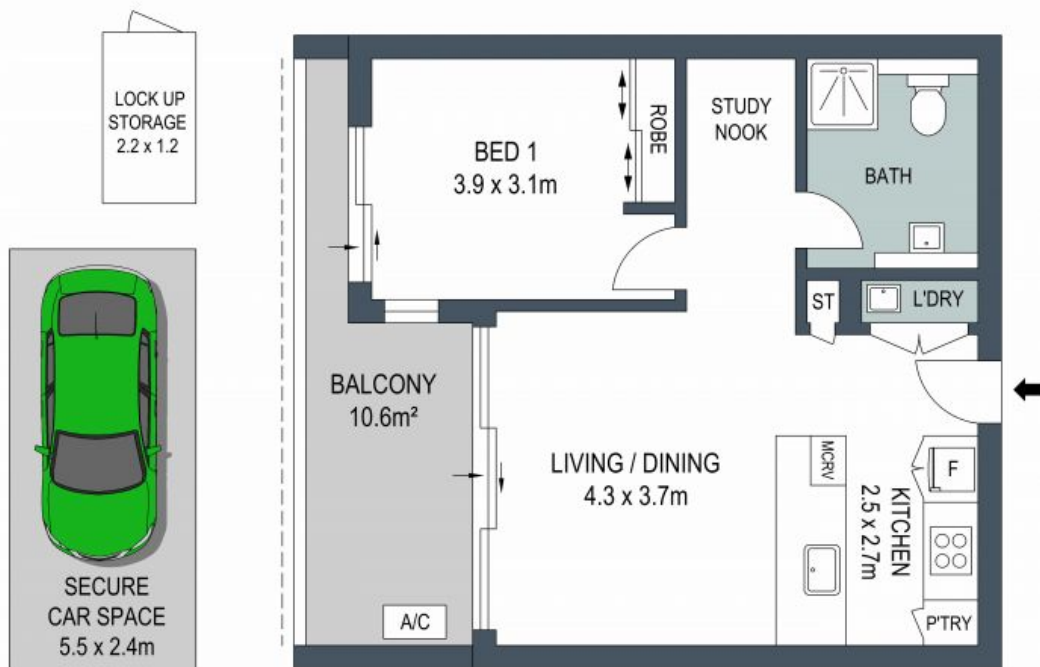
Water Rates: \$149.00/year (approx)

Strata Rates: \$569.00 p/q

Harwood
PROPERTY AGENTS

Lucas Harwood

0431 001 001



BASEMENT 1

LEVEL FIVE

ADDRESS:
509/1 Pinnacle Street, Miranda

DISCLAIMER: THIS IS FOR ILLUSTRATIVE PURPOSES ONLY, ALL DIMENSIONS ARE APPROXIMATE AND IT DOES NOT CONSTITUTE PART OF ANY LEGAL DOCUMENTS.