



1/125 Corea Street Miranda, NSW



4



2



2

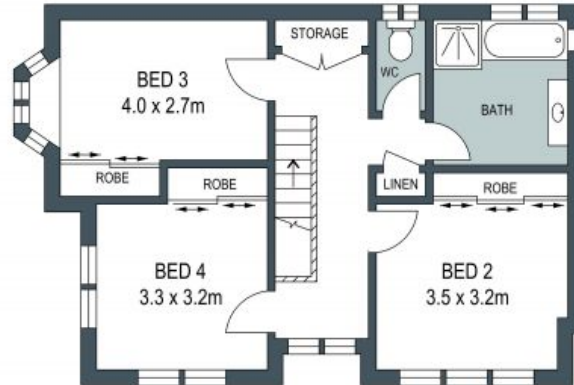
## Family Retreat

- Dual level brick home in a ridiculously central position
- Torrens title
- North-facing aspect fills the interiors with uplifting light
- Bay windowed kitchen flows to dining and outdoor entertaining area
- Upstairs bedrooms served by a spacious bathroom
- Built-in wardrobes, under stair and built-in garage storage
- Split-system air conditioning, ceiling fans
- Ground floor powder room, internal garage/house access
- Surrounded by level lawn with easycare plants
- Catchment for Gymea North Public School and Port Hacking High School
- Five minutes to Westfield, Gymea Bay Baths, boat ramp, hospital

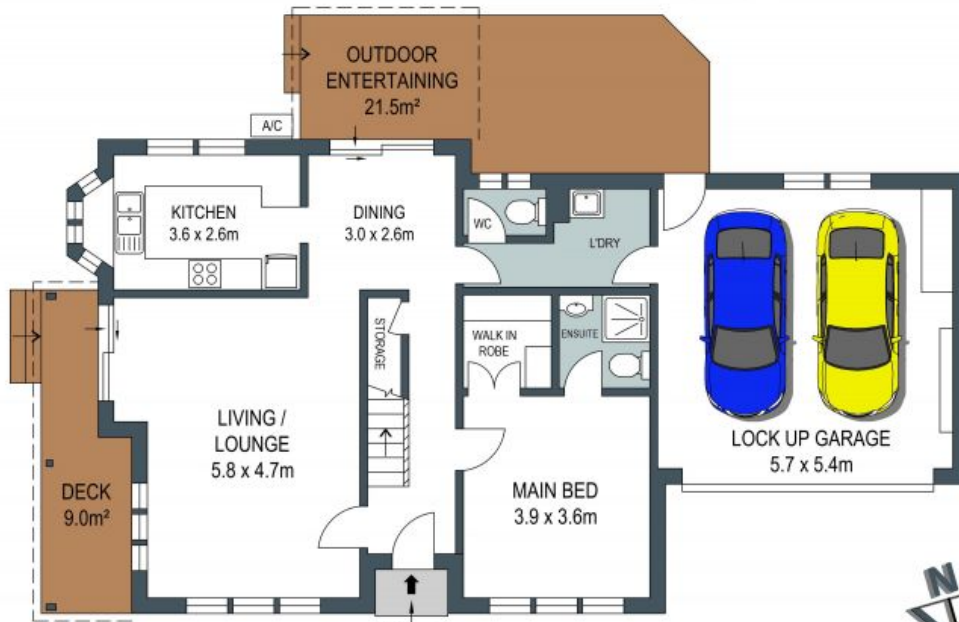
**Price:** \$1350000



SITE PLAN (NOT TO SCALE)

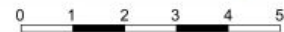


FIRST FLOOR



GROUND FLOOR

ADDRESS:  
**1/125 Corea Street, Miranda**



DISCLAIMER: THIS IS FOR ILLUSTRATIVE PURPOSES ONLY, ALL DIMENSIONS ARE APPROXIMATE AND IT DOES NOT CONSTITUTE PART OF ANY LEGAL DOCUMENTS.