



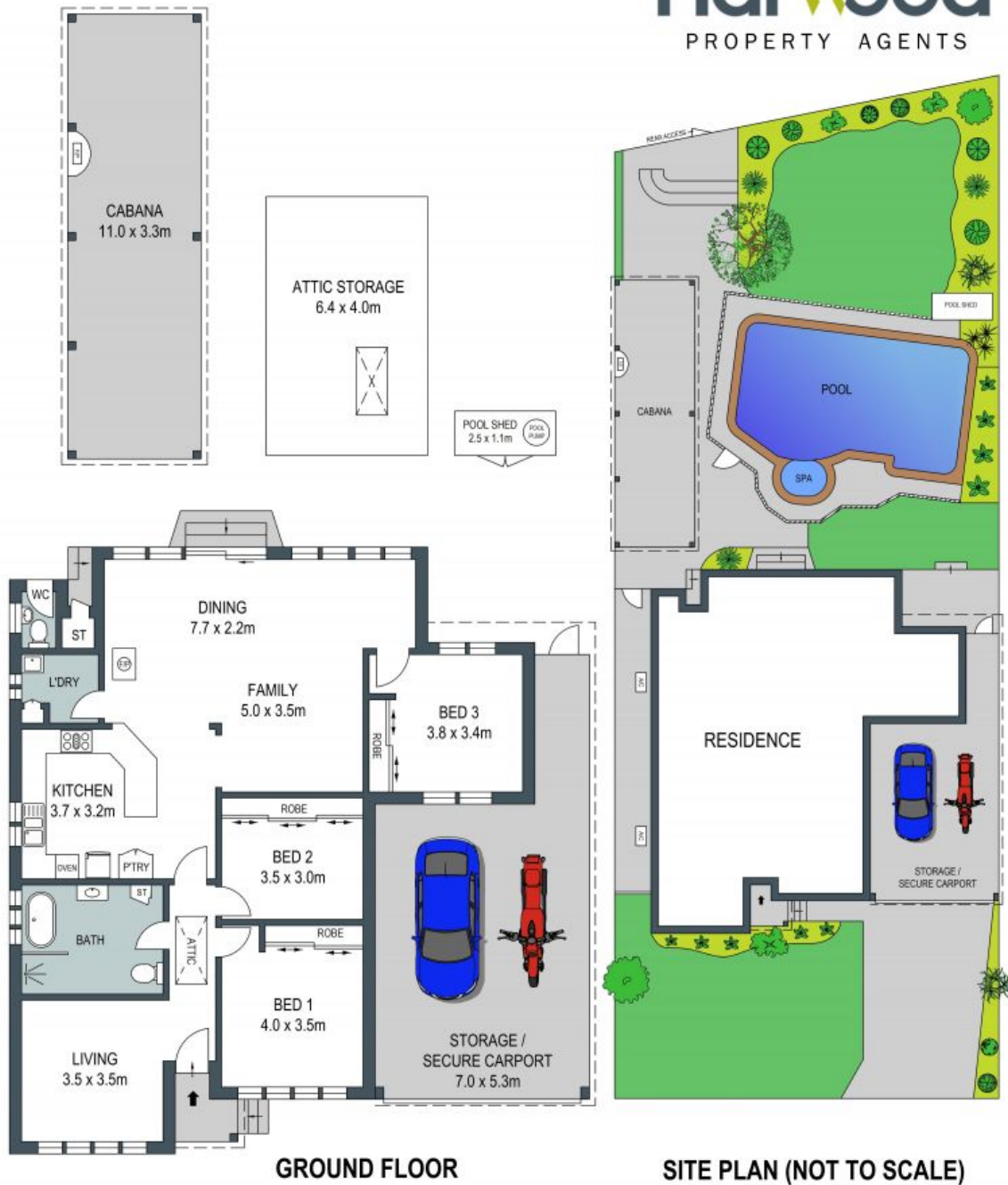
385 President Avenue Kirrawee, NSW



Family Residence

- Level parcel with a north-rear aspect
- Wonderfully open layout plus separate living room, perfect for families
- Gas kitchen with wraparound breakfast bar and stainless-steel appliances
- Beautiful new bathroom with walk-in shower, freestanding tub, heated towel rail
- Built-in wardrobes, timber floors, sizeable laundry
- Split-system air conditioning, slow combustion fireplace, ceiling fans, plantation shutters
- Attic storage, powder room with external access
- Level lawn, towering palms, low maintenance grounds
- Catchment for Kirrawee Public School and Gymea Technology High School

Price: \$1535000



ADDRESS:
385 President Avenue, Kirrawee

DISCLAIMER: THIS IS FOR ILLUSTRATIVE PURPOSES ONLY, ALL DIMENSIONS ARE APPROXIMATE AND IT DOES NOT CONSTITUTE PART OF ANY LEGAL DOCUMENTS.

