



153 The Boulevarde Miranda, NSW



4



2



2

Spacious Single Level Home

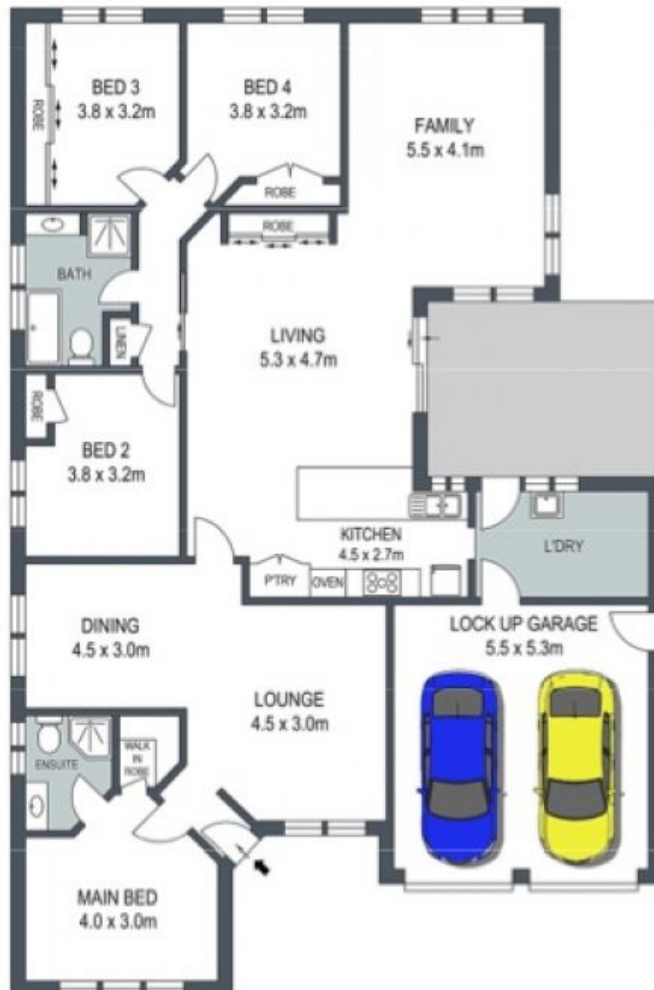
- North-rear layout on a central address
- Multiple living areas
- Chic two-toned kitchen with breakfast bar, gas stove, stainless appliances
- Children's rooms and bathroom set away from living spaces
- Integrated storage for all bedrooms
- Large laundry with external access
- Ducted air conditioning, tiled living areas
- Side access suitable for a caravan, boat or extra vehicle
- Fully fenced backyard with healthy lawn
- Opposite Miranda North Public School, walking distance to Endeavour Sports High School and Our Lady Star of the Sea Primary
- Three minutes to Westfield Miranda, parks, tennis, Sutherland Hospital

Price: \$1540000

Harwood
PROPERTY AGENTS

Lucas Harwood

0431 001 001



GROUND FLOOR



SITE PLAN (NOT TO SCALE)

ADDRESS:
153 The Boulevarde, Miranda

DISCLAIMER: THIS IS FOR ILLUSTRATIVE PURPOSES ONLY, ALL DIMENSIONS ARE APPROXIMATE AND IT DOES NOT CONSTITUTE PART OF ANY LEGAL DOCUMENTS.

