



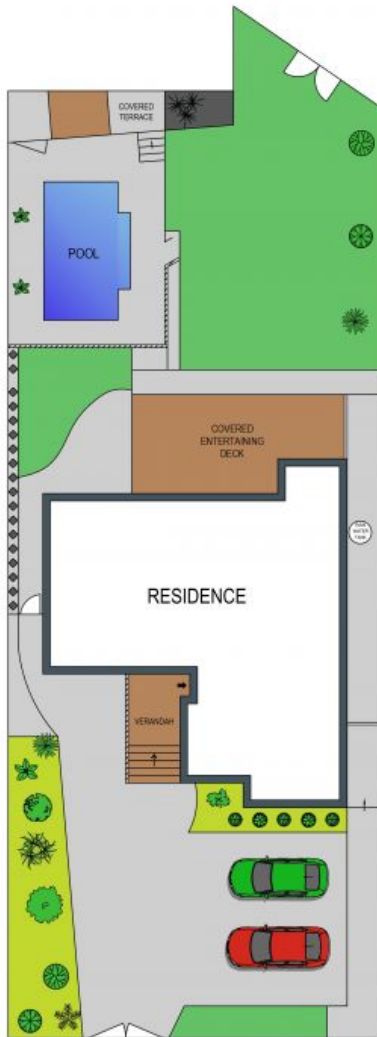
412 President Avenue Kirrawee, NSW



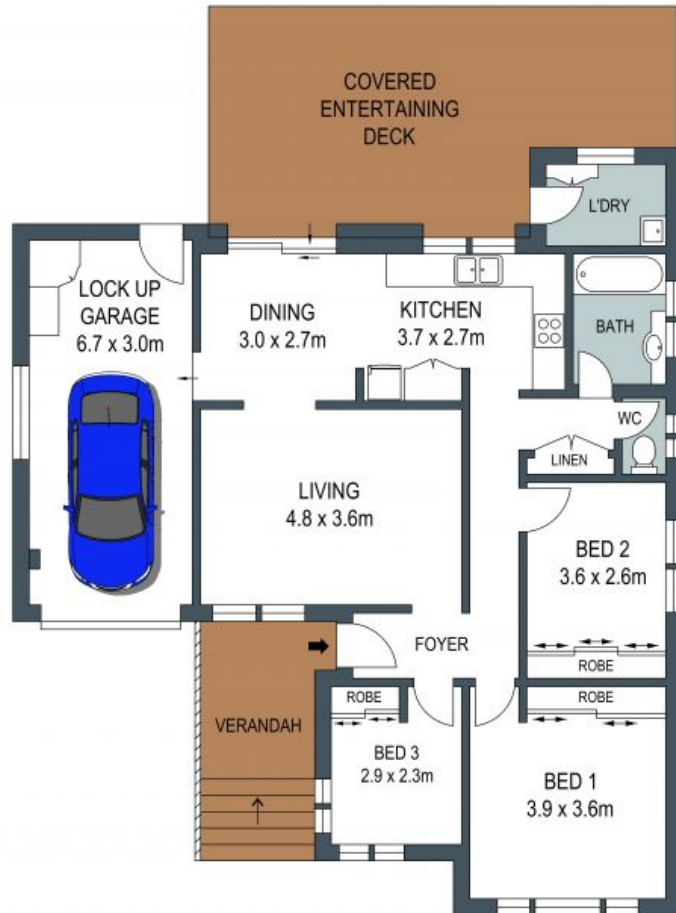
Family Entertainer

- North-rear orientation on a minimal maintenance block
- Stainless steel appliances, freestanding 900mm oven with gas cooktop
- Well-scaled master bedroom with leafy outlook
- Mirrored built-in wardrobes, linen press, plantation shutters
- Timber floors, split-system air conditioning, ceiling fans
- Travertine-edged pool with solar heating, privacy screening on deck
- Fenced front and rear yards, off-street parking for multiple vehicles
- Extra access from Lowana Avenue gives flexibility
- Walk to Kirrawee Public and Kirrawee High Schools and St Catherine Catholic School
- Five minutes to Westfield Miranda, Gymea Bay Baths, boat ramp

Price: Contact Agent



SITE PLAN (NOT TO SCALE)



GROUND FLOOR

ADDRESS:
412 President Avenue, Kirrawee

DISCLAIMER: THIS IS FOR ILLUSTRATIVE PURPOSES ONLY, ALL DIMENSIONS ARE APPROXIMATE AND IT DOES NOT CONSTITUTE PART OF ANY LEGAL DOCUMENTS.

