



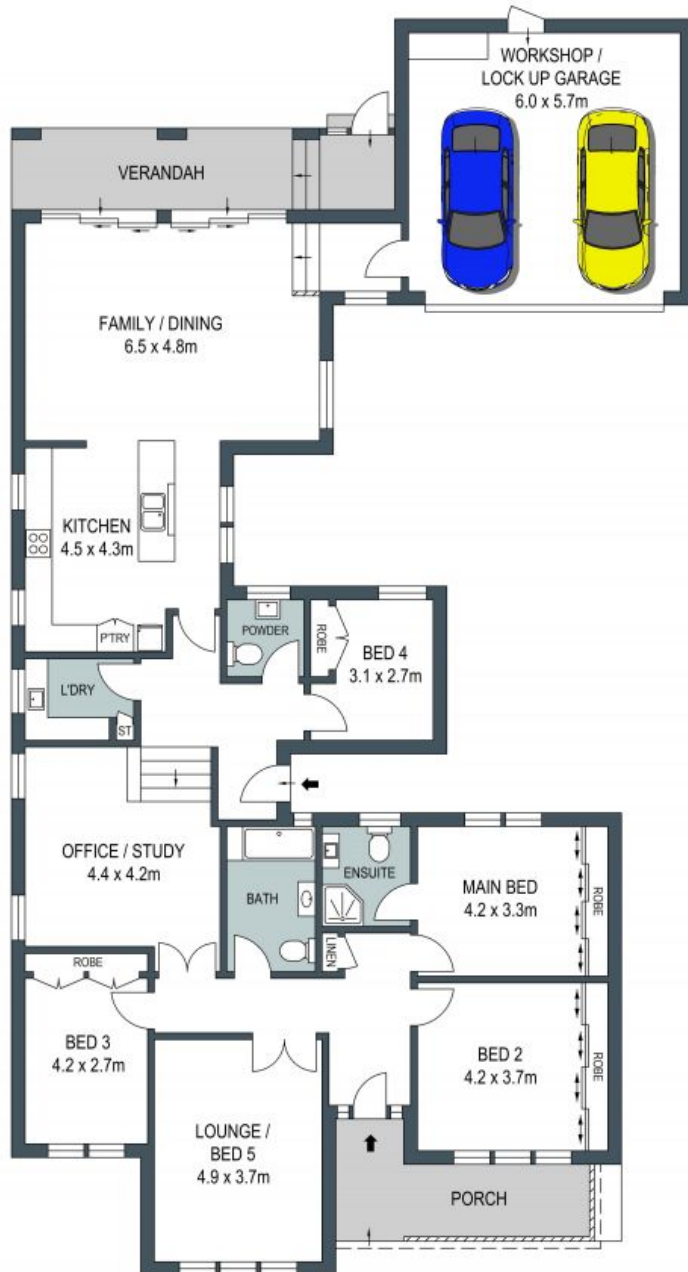
209 President Avenue Miranda, NSW



## Large Living

- North-rear aspect on 765sqm
- Large stone kitchen with glass splashback, stainless steel appliances
- Rumpus ideal as an office or TV room
- Lounge room doubles as a fifth bedroom
- Master with ensuite, built-in wardrobes for four bedrooms
- Skylight soaks the family bathroom in natural light
- Generous laundry, separate powder room
- Parquet floors, surround sound in lounge room, feature cornices
- Double glazed windows, plantation shutters
- Split system air conditioning, gas hot water, ADT security system
- 6kW solar panels with Tesla battery back up
- Attic storage with lighting and shelving, underground water and stormwater tanks

**Price:** \$1800000



**GROUND FLOOR**



**SITE PLAN  
(NOT TO SCALE)**



DISCLAIMER: THIS IS FOR ILLUSTRATIVE PURPOSES ONLY, ALL DIMENSIONS ARE APPROXIMATE AND IT DOES NOT CONSTITUTE PART OF ANY LEGAL DOCUMENTS.