



110/8-14 Willock Avenue Miranda, NSW



2



2

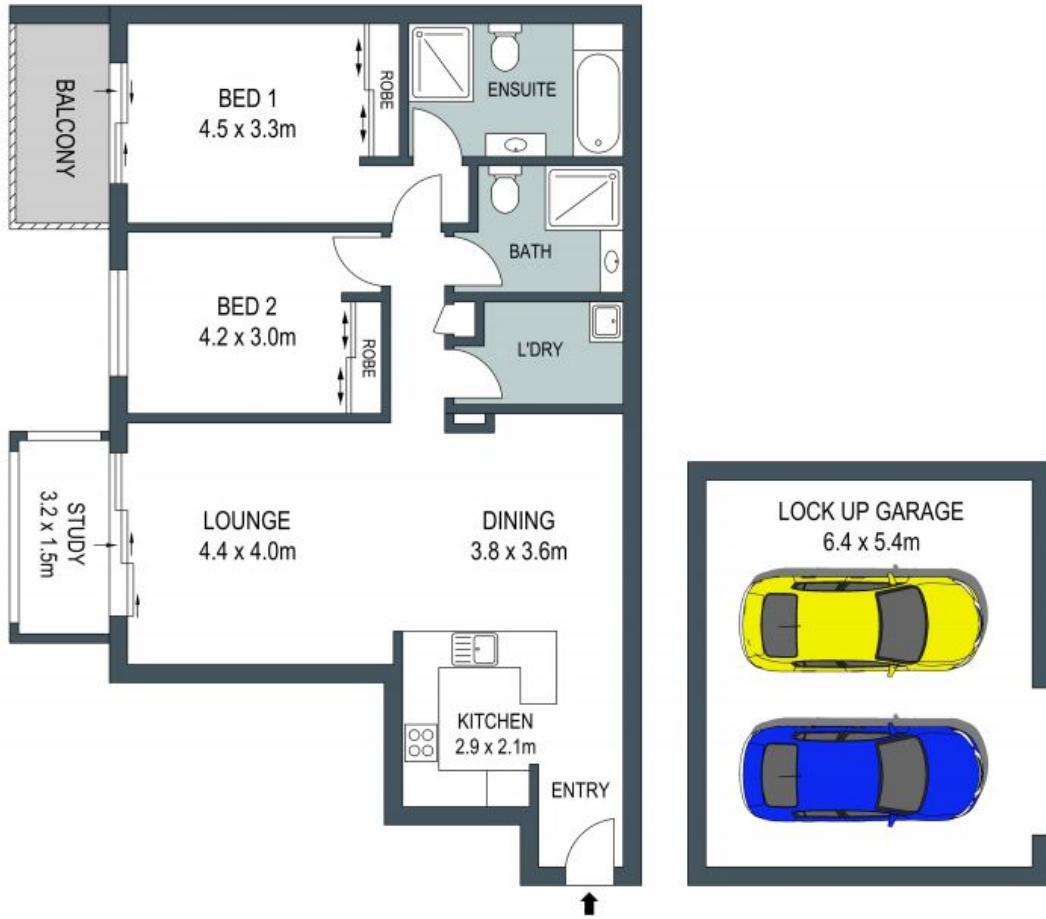


2

### City Glimpses

- Open plan living with timber floors throughout, separate study
- New kitchen with 40mm granite bench-tops, European appliances, gas cooking and dishwasher
- Huge master bedroom with full size ensuite, and balcony
- High ceiling, three step cornices, air conditioning
- Level security entrance via landscaped walkway
- Lift access to the 9th floor, secure double garage sized garage, pool, gym and BBQ area
- Metres from Westfield Miranda, schools, transport and hospital [

**Price:** \$680,000 - \$740,000  
**Inspect:** Saturday, 11th December 2021 1:30 - 2:00



**LEVEL NINE**



DISCLAIMER: THIS IS FOR ILLUSTRATIVE PURPOSES ONLY, ALL DIMENSIONS ARE APPROXIMATE AND IT DOES NOT CONSTITUTE PART OF ANY LEGAL DOCUMENTS.