



30 Crookwell Avenue Miranda, NSW



3



2

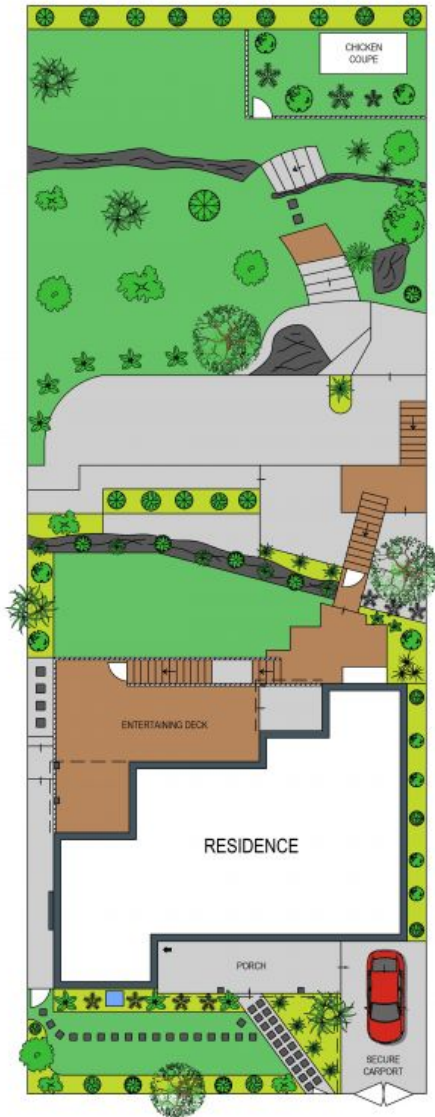


1

Effortless entertainer

- Family-friendly, South Miranda address
- Impressive, private street presence on a large block
- Stone island kitchen with oversized gas cooktop and oven, glass splashback
- Bedrooms set away from living zones, each with a built-in wardrobe
- Master opens to deck
- Separate bath and shower
- Private access for rumpus with own bathroom and kitchen
- Open fireplace, split system air conditioning, timber floors, under house storage
- Lush garden with bench seat and chicken coop
- Westfield Miranda, trains, Yowie Bay boat ramp and parks five minutes away

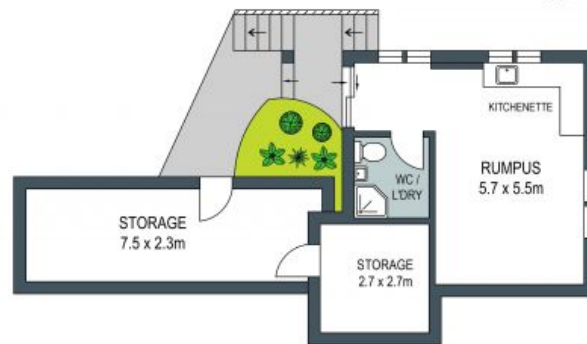
Price: \$1650000



SITE PLAN (NOT TO SCALE)



GROUND FLOOR



LOWER GROUND FLOOR



DISCLAIMER: THIS IS FOR ILLUSTRATIVE PURPOSES ONLY, ALL DIMENSIONS ARE APPROXIMATE AND IT DOES NOT CONSTITUTE PART OF ANY LEGAL DOCUMENTS.