



12 Fletcher Avenue Miranda, NSW



5



2



1

Renovated Home

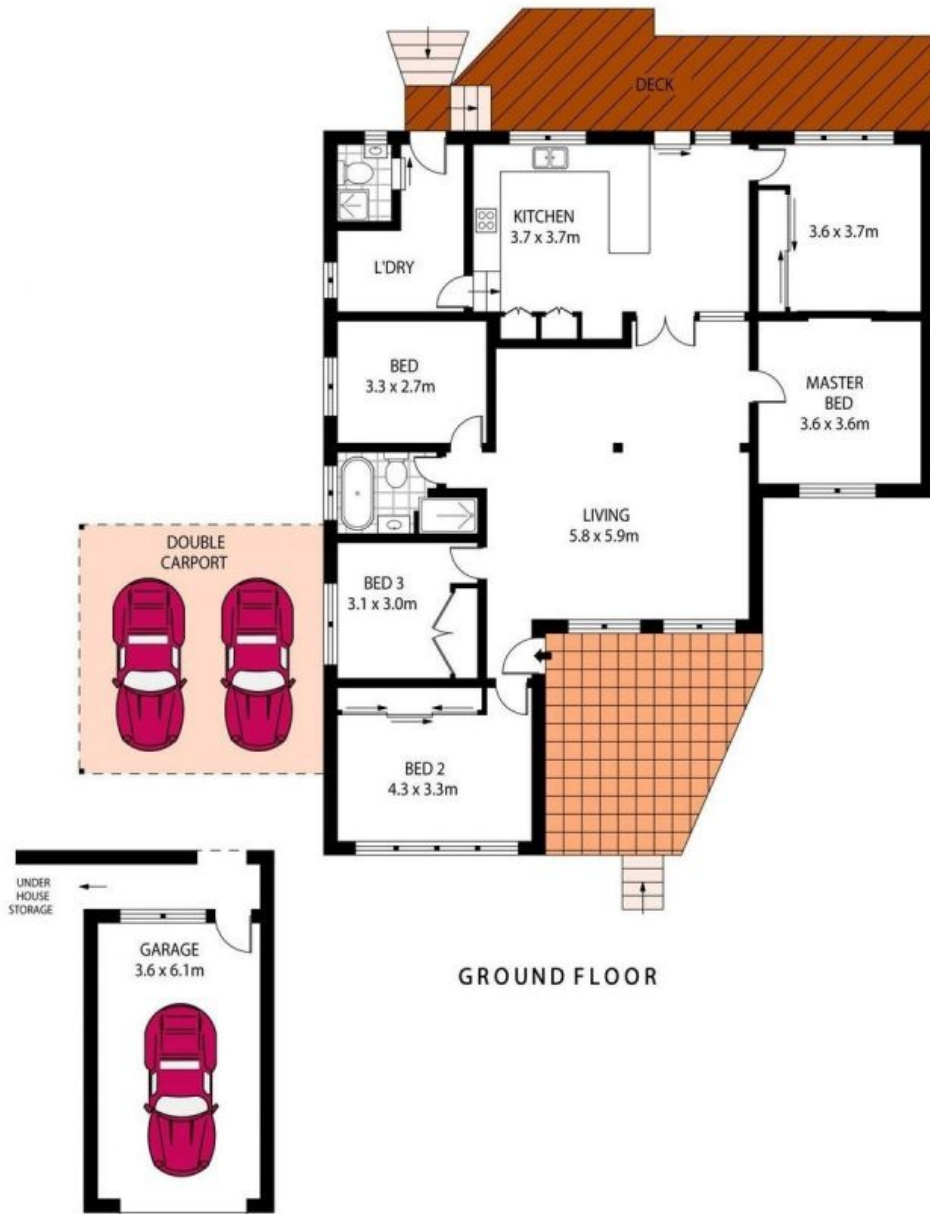
- Large open-plan layout with multiple living areas and dining zones with split-system air-conditioning
- Open-plan kitchen with a new oven & stove top and a peaceful outlook over the backyard
- Five spacious bedrooms, three with built-in wardrobes
- Renovated main bathroom includes a separate bath and shower
- Freshly painted walls throughout and hardwood timber flooring
- Covered decked area flows off kitchen and dining area
- Large backyard with mature trees, grassed yard and an in-ground pool
- One car space under carport and a single lock-up garage
- Internal laundry with additional shower & toilet
- Approximately 400m to Miranda train station and Westfield Miranda
- Located in a great cul-de-sac in a quiet, convenient neighbourhood

Price: \$1000 pw

Harwood
PROPERTY AGENTS

Lucas Harwood

0431 001 001



LOWER GROUND FLOOR



PLANS SHOWN ONLY INDICATIVE OF LAYOUT. DIMENSIONS ARE APPROXIMATE.
Floor plans by www.remaustralia.com
Ref. No. 12570



12 FLETCHER AVENUE

MIRANDA