



12 Fletcher Avenue Miranda, NSW



5



2



1

## Renovated Home

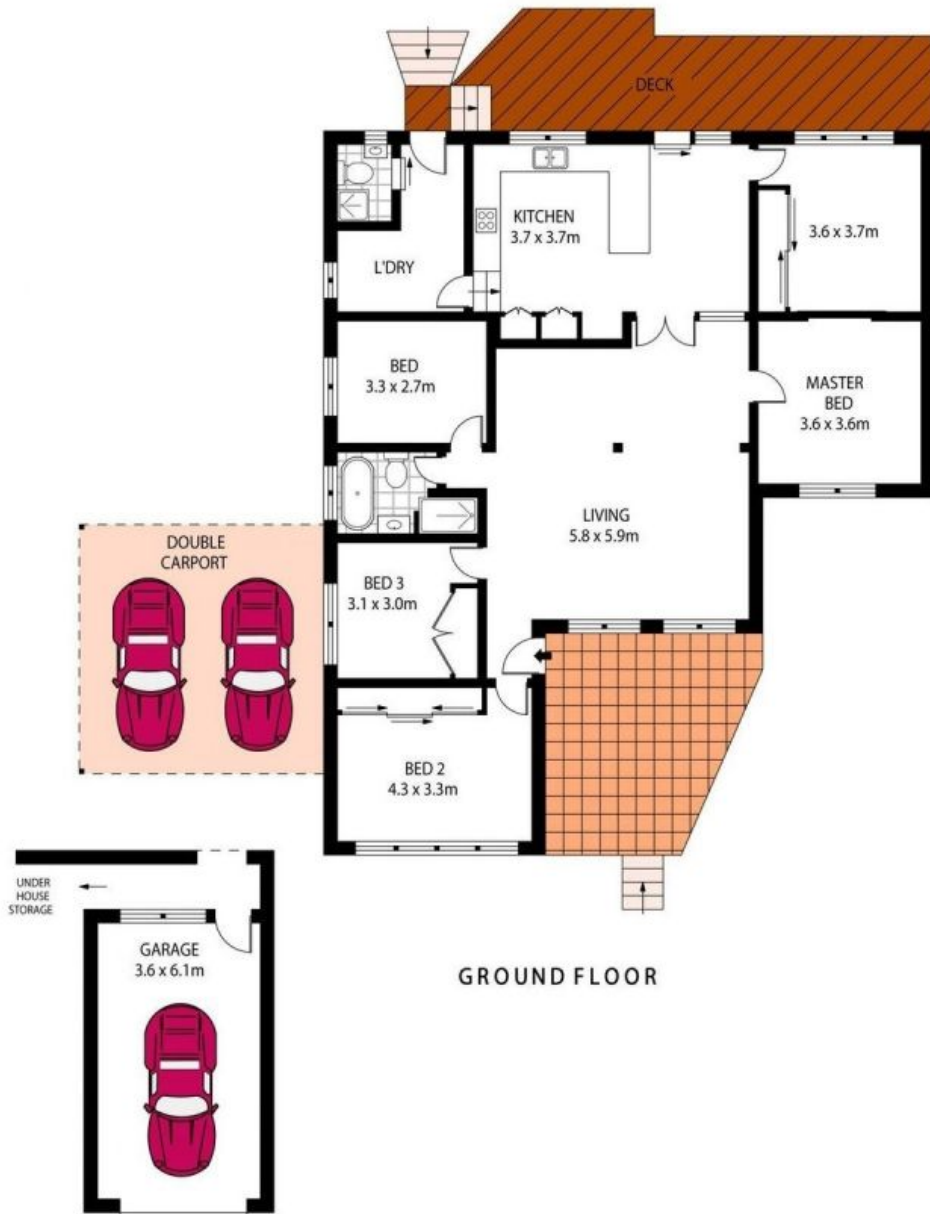
- Large open-plan layout with multiple living areas and dining zones with split-system air-conditioning
- Open-plan kitchen with a new oven & stove top and a peaceful outlook over the backyard
- Five spacious bedrooms, three with built-in wardrobes
- Renovated main bathroom includes a separate bath and shower
- Freshly painted walls throughout and hardwood timber flooring
- Covered decked area flows off kitchen and dining area
- Large backyard with mature trees, grassed yard and an in-ground pool
- One car space under carport and a single lock-up garage
- Internal laundry with additional shower & toilet
- Approximately 400m to Miranda train station and Westfield Miranda
- Located in a great cul-de-sac in a quiet, convenient neighbourhood

**Price:** \$1000 pw

**Harwood**  
PROPERTY AGENTS

**Deanna Stannard**

0415 427 661



LOWER GROUND FLOOR



PLANS SHOWN ONLY INDICATIVE OF LAYOUT. DIMENSIONS ARE APPROXIMATE.  
Floor plans by [www.remaustralia.com](http://www.remaustralia.com)  
Ref. No. 12570



12 FLETCHER AVENUE

MIRANDA