



132 Peninsular Road Grays Point, NSW



6



3



2

Family Haven

- Sun-filled living area opens onto huge entertaining deck
- Large, well-maintained kitchen with timber cabinetry
- Spacious dining room opens onto a sunny balcony
- Three bedrooms downstairs, all with built-in wardrobes
- Additional three bedrooms upstairs, two with built-in wardrobes
- Renovated ensuite with a separate bath and shower
- Ducted air conditioning, ceiling fans, timber floors
- Located in the zone for Kirrawee High School
- Close to Miranda Westfield and train station

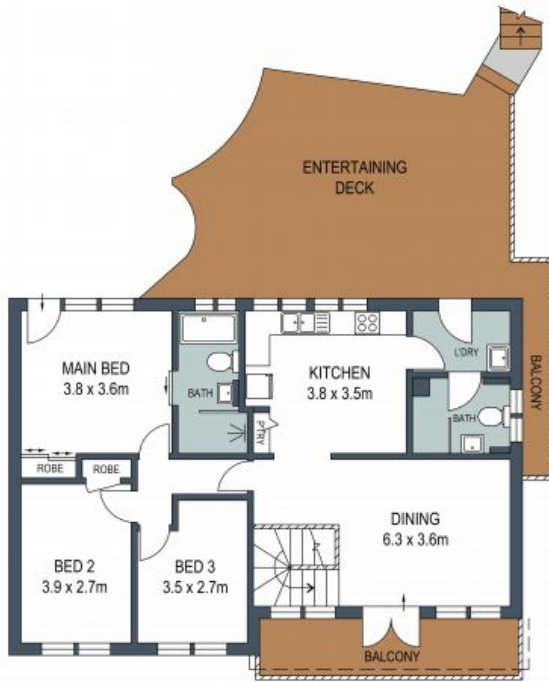
Please contact Deanna on 0415427661 to arrange a private inspection.

Price: \$1,100 pw

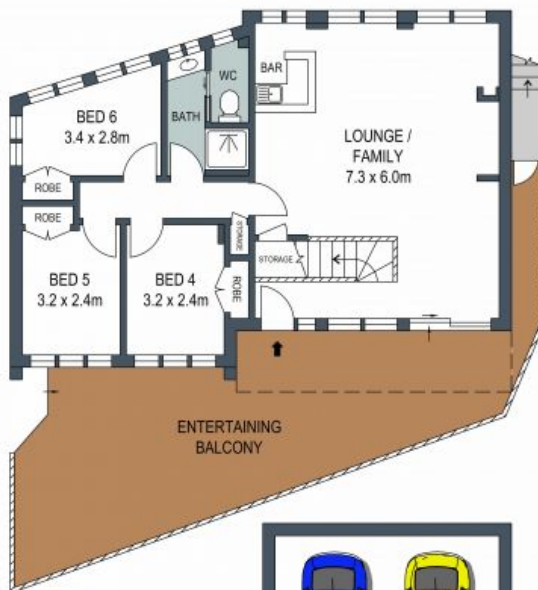
Harwood
PROPERTY AGENTS

Lucas Harwood

0431 001 001



FIRST LEVEL



ENTRY LEVEL

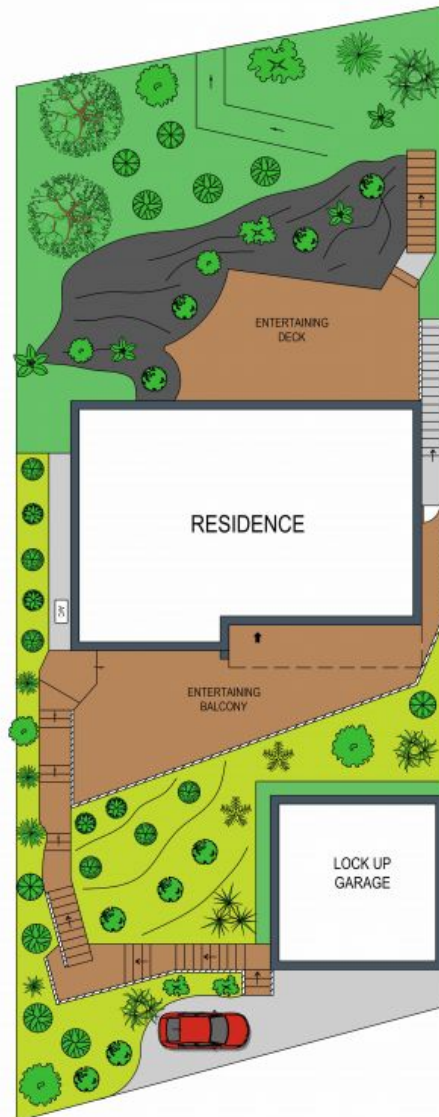


GROUND LEVEL

ADDRESS:

132 Peninsular Road, Grays Point

DISCLAIMER: THIS IS FOR ILLUSTRATIVE PURPOSES ONLY, ALL DIMENSIONS ARE APPROXIMATE AND IT DOES NOT CONSTITUTE PART OF ANY LEGAL DOCUMENTS.



**SITE PLAN
(NOT TO SCALE)**



0 1 2 3 4 5