



132 Peninsular Road Grays Point, NSW



6



3



2

## Family Haven

- Sun-filled living area opens onto huge entertaining deck
- Large, well-maintained kitchen with timber cabinetry
- Spacious dining room opens onto a sunny balcony
- Three bedrooms downstairs, all with built-in wardrobes
- Additional three bedrooms upstairs, two with built-in wardrobes
- Renovated ensuite with a separate bath and shower
- Ducted air conditioning, ceiling fans, timber floors
- Located in the zone for Kirrawee High School
- Close to Miranda Westfield and train station

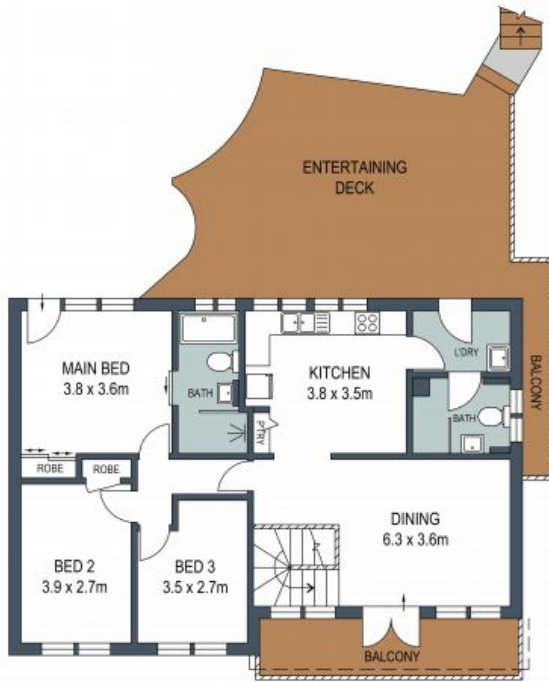
Please contact Deanna on 0415427661 to arrange a private inspection.

**Price:** \$1,100 pw

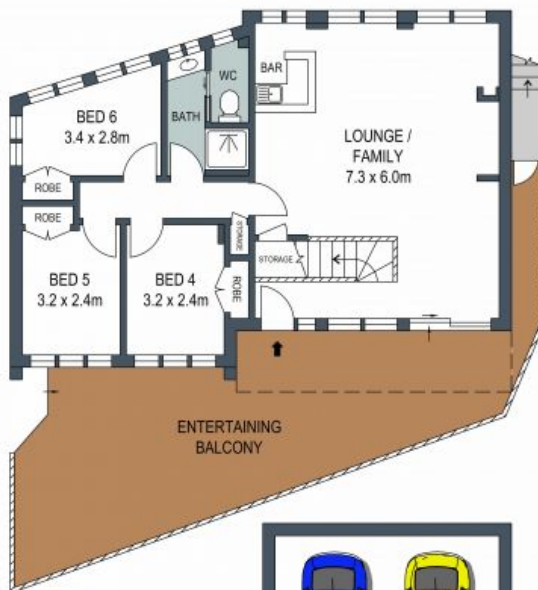
**Harwood**  
PROPERTY AGENTS

**Lucas Harwood**

0431 001 001



**FIRST LEVEL**



**ENTRY LEVEL**

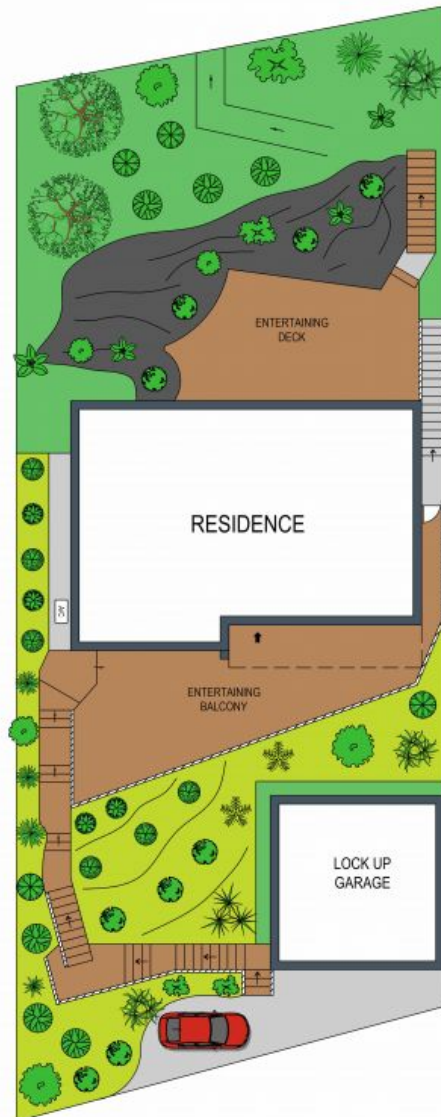


**GROUND LEVEL**

ADDRESS:

**132 Peninsular Road, Grays Point**

DISCLAIMER: THIS IS FOR ILLUSTRATIVE PURPOSES ONLY, ALL DIMENSIONS ARE APPROXIMATE AND IT DOES NOT CONSTITUTE PART OF ANY LEGAL DOCUMENTS.



**SITE PLAN  
(NOT TO SCALE)**



0 1 2 3 4 5