

51 View Street Gymea, NSW

 3

 2

 1

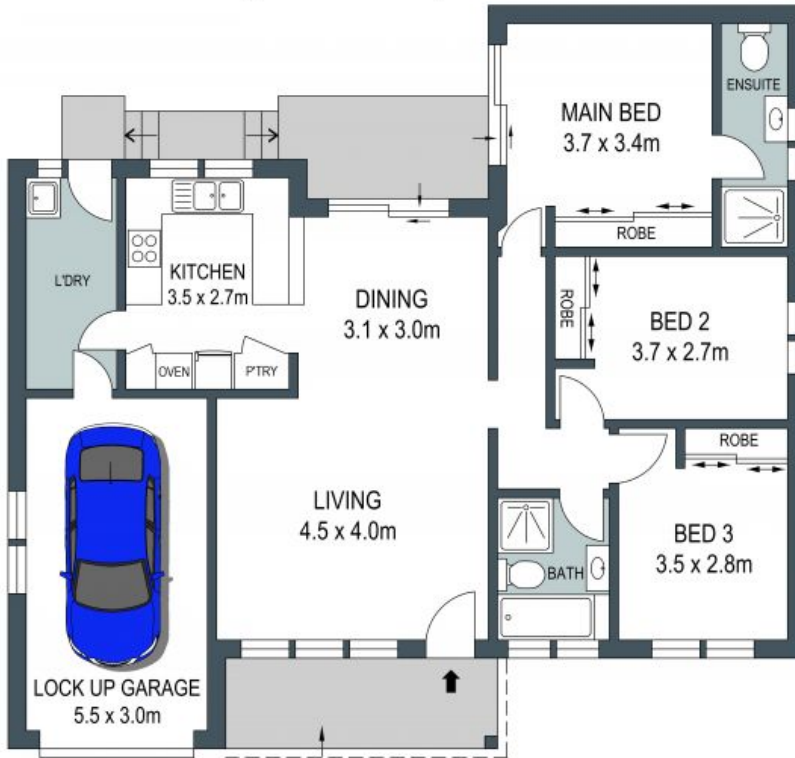
### Level Living

- Ten minute walk to Westfield Miranda
- Stroll to Gymea shops and station
- Breakfast bar kitchen looks to north-facing backyard
- Master bedroom with ensuite leads out to yard
- Built-in wardrobes for all bedrooms
- Full size laundry with external access
- Front lawn with mature greenery for street privacy
- Internal access to garage, two garden sheds
- Easy walk or bike ride to Kirrawee Public School and Port Hacking High School
- Moments to waterfront, parks and child care

**Price:** Confidential



**SITE PLAN (NOT TO SCALE)**



**GROUND FLOOR**



DISCLAIMER: THIS IS FOR ILLUSTRATIVE PURPOSES ONLY, ALL DIMENSIONS ARE APPROXIMATE AND IT DOES NOT CONSTITUTE PART OF ANY LEGAL DOCUMENTS.