



132 Peninsular Road Grays Point, NSW



6



3

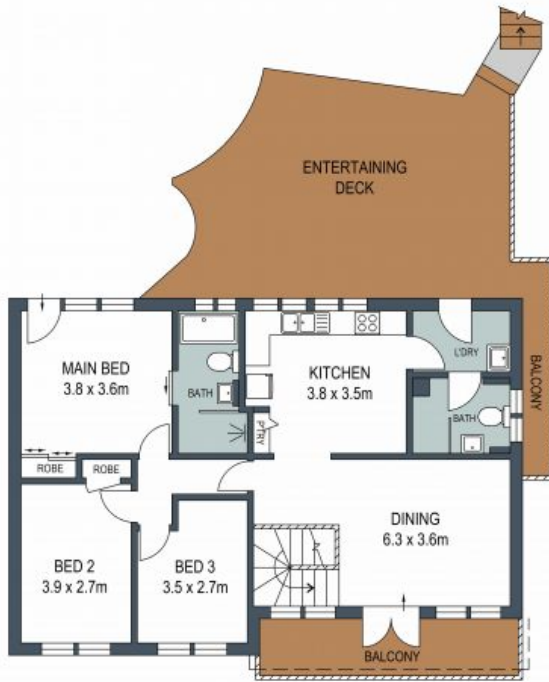


2

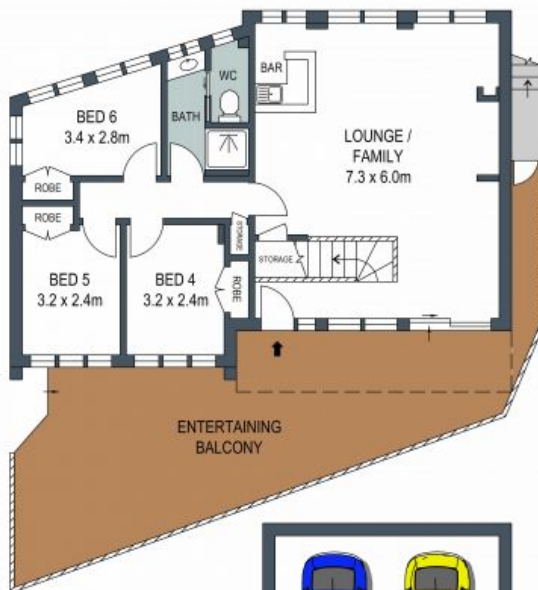
Natural Haven

- Stylishly presented with scope for extra updates
- Huge deck washed in northern sun
- New ensuite with bath for master bedroom
- Built-in wardrobes for five bedrooms
- Large, open kitchen with timber cabinetry
- Dining room opens to balcony
- Wet bar in family room
- Ducted air conditioning, ceiling fans, timber floors
- Zoned for Kirrawee High School
- Close to Westfield Miranda, trains, hospital and beaches

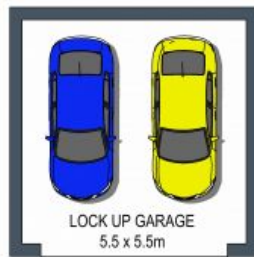
Price: Confidential



FIRST LEVEL



ENTRY LEVEL



GROUND LEVEL



**SITE PLAN
(NOT TO SCALE)**

ADDRESS:

132 Peninsular Road, Grays Point

DISCLAIMER: THIS IS FOR ILLUSTRATIVE PURPOSES ONLY, ALL DIMENSIONS ARE APPROXIMATE AND IT DOES NOT CONSTITUTE PART OF ANY LEGAL DOCUMENTS.