



9 Windermere Avenue Miranda, NSW



6



3

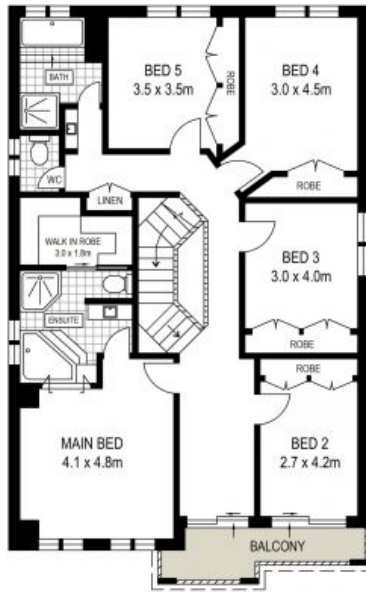


2

Luxe Convenience

- Immaculate 607sqm parcel with electric gated entry
- Designer gas kitchen with island bench, wine storage, stainless appliances
- Living areas include integrated joinery and Google Assist lighting
- Master retreat with spa ensuite and walk-in wardrobe
- Built-in wardrobes for five bedrooms
- Ground floor bedroom and own bathroom ideal for in laws or guests
- Private backyard and alfresco, garden shed, three-phase pool heating
- Security cameras, NBN connected, plantation shutters
- 10.45kWh solar power, ducted air conditioning and vacuum
- Close to Miranda North Public School, Our Lady Star of the Sea Catholic Primary School, Endeavour Sports High School

Price: \$2250000



FIRST FLOOR



GROUND FLOOR



SITE PLAN
(NOT TO SCALE)



DISCLAIMER: THIS IS FOR ILLUSTRATIVE PURPOSES ONLY, ALL DIMENSIONS ARE APPROXIMATE AND IT DOES NOT CONSTITUTE PART OF ANY LEGAL DOCUMENTS.