



14A/5-29 Wandella Road Miranda, NSW



3



2



1

Spacious Retreat

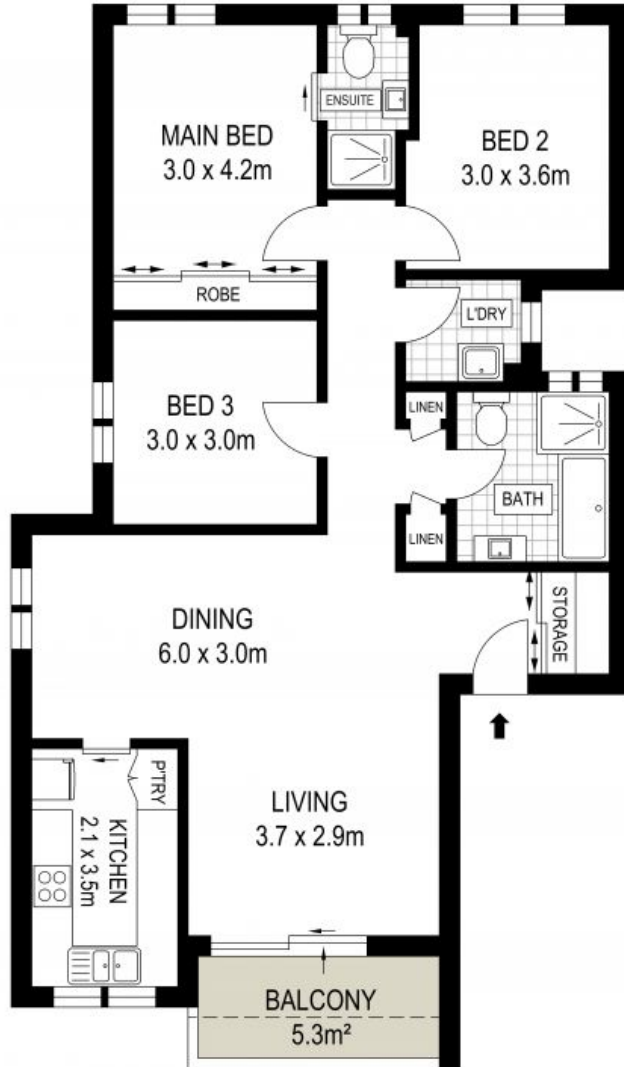
- Wonderfully spacious layout features an open plan living/dining
- Interiors open to balcony bathed in sunshine
- Sleek granite kitchen equipped with quality appliances
- Well scaled bedrooms, one with built-in wardrobe
- Modern tiled bathroom with full-sized bath and ensuite
- Lock-up garage with additional secure storage space
- Internal laundry, security intercom, leafy outlook
- Resort facilities, indoor/outdoor pool, park surrounds

Price: \$665000

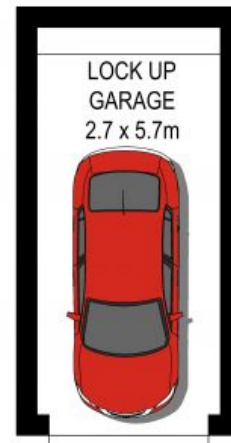
Council Rates: \$348.10 p/q

Water Rates: \$147.30 p/q

Strata Rates: \$1,244.00 p/q



TOP FLOOR / SECOND FLOOR



GROUND FLOOR

ADDRESS:
14A/5 Wandella Road, Miranda

DISCLAIMER: THIS IS FOR ILLUSTRATIVE PURPOSES ONLY, ALL DIMENSIONS ARE APPROXIMATE AND IT DOES NOT CONSTITUTE PART OF ANY LEGAL DOCUMENTS.

