



8/474 Kingsway Miranda, NSW



2



1



2

City Views

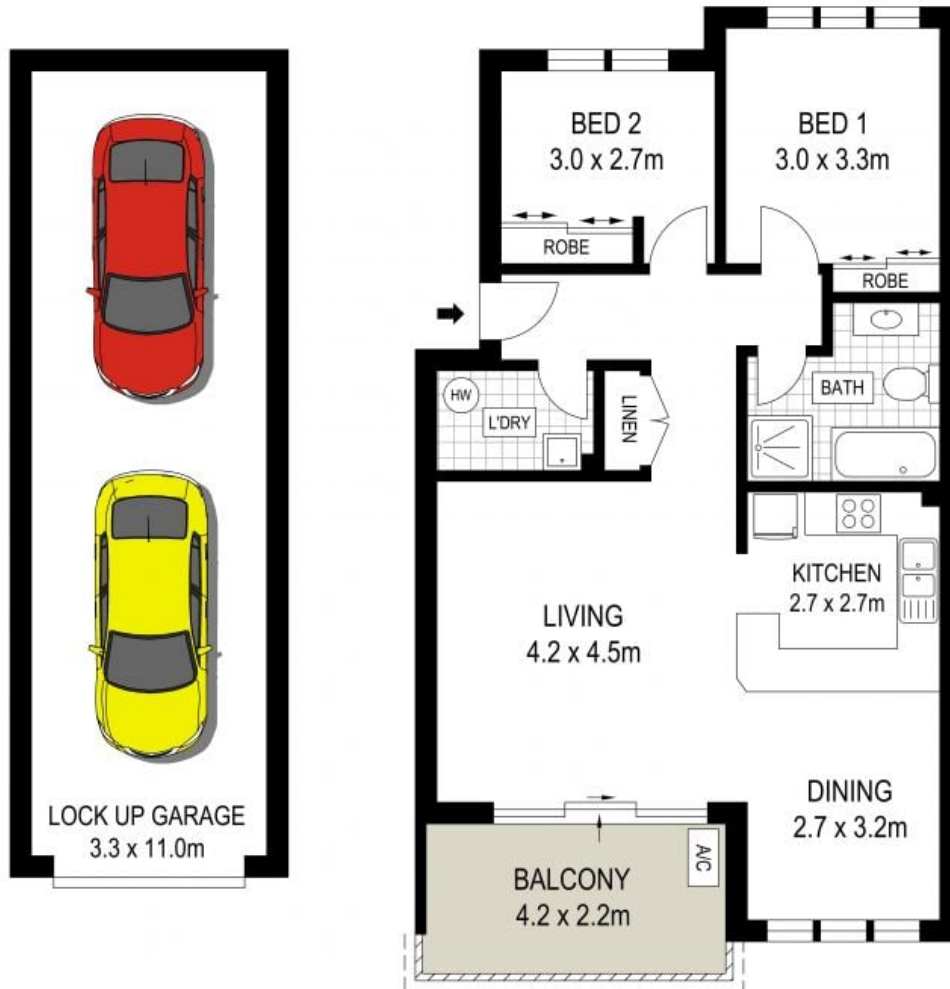
- Open-plan layout provides generous living and dining areas
- Sunny kitchen with quality appliances, ample bench and storage space
- Two, sizable bedrooms, both with built-in wardrobes and elevated outlook
- Coveted north-facing entertainer's balcony, with stunning views
- Internal laundry, spacious, central bathroom with separate bathtub and shower
- Secure, double, lock-up garage with additional visitor parking

Price: \$565000

Council Rates: \$348.10 p/q

Water Rates: \$170.00 p/q

Strata Rates: \$775.00 p/q



BASEMENT

TOP FLOOR / THIRD FLOOR

ADDRESS:
8/474- 482 Kingsway, Miranda

DISCLAIMER: THIS IS FOR ILLUSTRATIVE PURPOSES ONLY, ALL DIMENSIONS ARE APPROXIMATE AND IT DOES NOT CONSTITUTE PART OF ANY LEGAL DOCUMENTS.

