



1 Marion Street Gymea, NSW



3



1



2

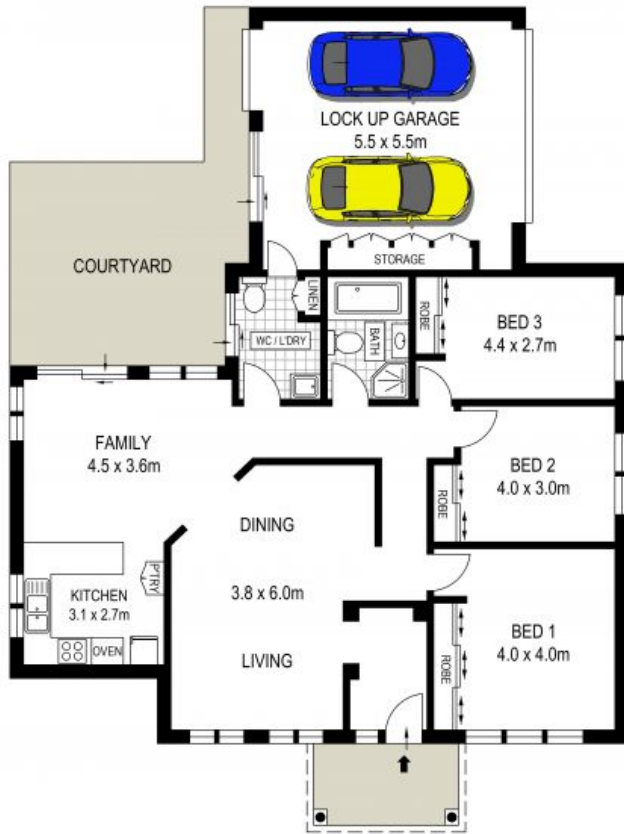
Charming Home

- Impressive facade with undercover entry and beautifully maintained landscaped gardens
- Welcoming entrance leads to formal open plan living and dining with garden outlook
- Bright kitchen with quality appliances, breakfast bench and ample storage
- Inviting family room flowing out onto a peaceful courtyard, perfect for entertaining
- Generous bedrooms with built-in wardrobes and peaceful, light-filled aspects
- Central family bathroom with full-sized bathtub and shower
- Large laundry, with additional w/c and access to both the garage and rear garden

Price: \$1000000

Council Rates: \$283.00 p/q

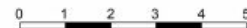
Water Rates: \$165.00 p/q



GROUND FLOOR



**SITE PLAN
(NOT TO SCALE)**



DISCLAIMER: THIS IS FOR ILLUSTRATIVE PURPOSES ONLY, ALL DIMENSIONS ARE APPROXIMATE AND IT DOES NOT CONSTITUTE PART OF ANY LEGAL DOCUMENTS.