



10 Paris Place Miranda, NSW



3



2



2

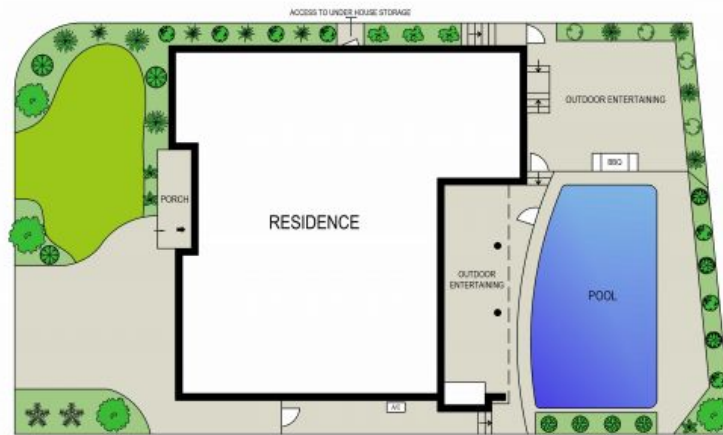
Family Entertainer

- Classic living and dining room opens out onto an exquisite entertaining area including inviting, undercover patio which captures year-round sun
- Flowing floorplan with generous proportions and an abundance of natural light creates a wonderful sense of space
- Well designed kitchen includes an integrated dishwasher, refrigerator and microwave, granite benchtops and quality appliances
- Featuring thoughtful built-ins including stylish, full-length television cabinet, desk and sun-lounge
- Three double bedrooms, all with built-in wardrobes, plantation shutters and leafy outlook, master with fully tiled ensuite
- Spacious additional bathroom/laundry includes a full shower and outdoor access, perfect for summer swimmers
- Beautiful in-ground swimming pool featuring Japanese mosaic tiles

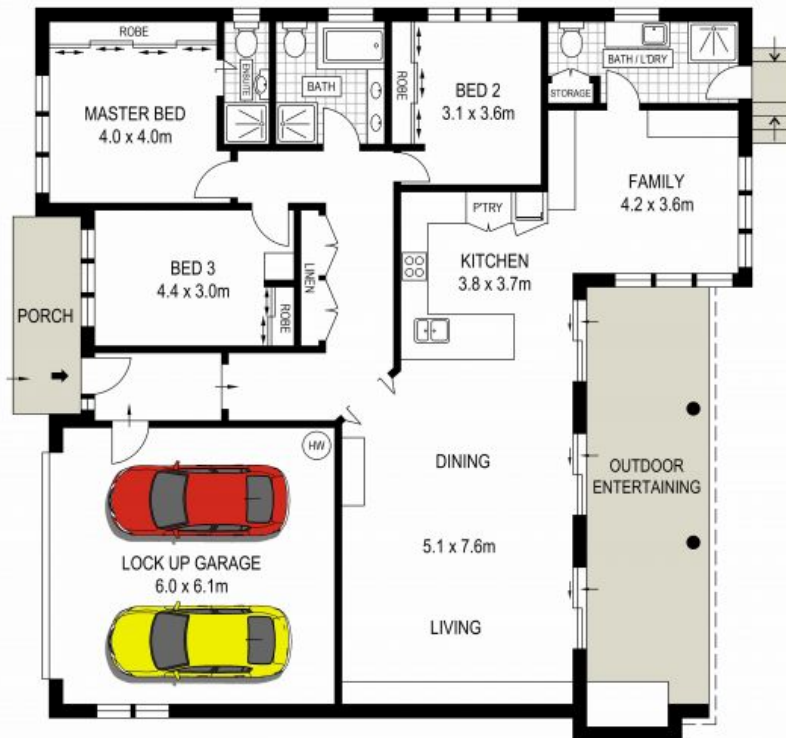
Price: \$1508000

Council Rates: \$496.60 p/q

Water Rates: \$306.67 p/q



SITE PLAN (NOT TO SCALE)



GROUND FLOOR

ADDRESS:
10 Paris Place, Miranda



DISCLAIMER: THIS IS FOR ILLUSTRATIVE PURPOSES ONLY, ALL DIMENSIONS ARE APPROXIMATE AND IT DOES NOT CONSTITUTE PART OF ANY LEGAL DOCUMENTS.