



12 Fletcher Avenue Miranda, NSW



5



2

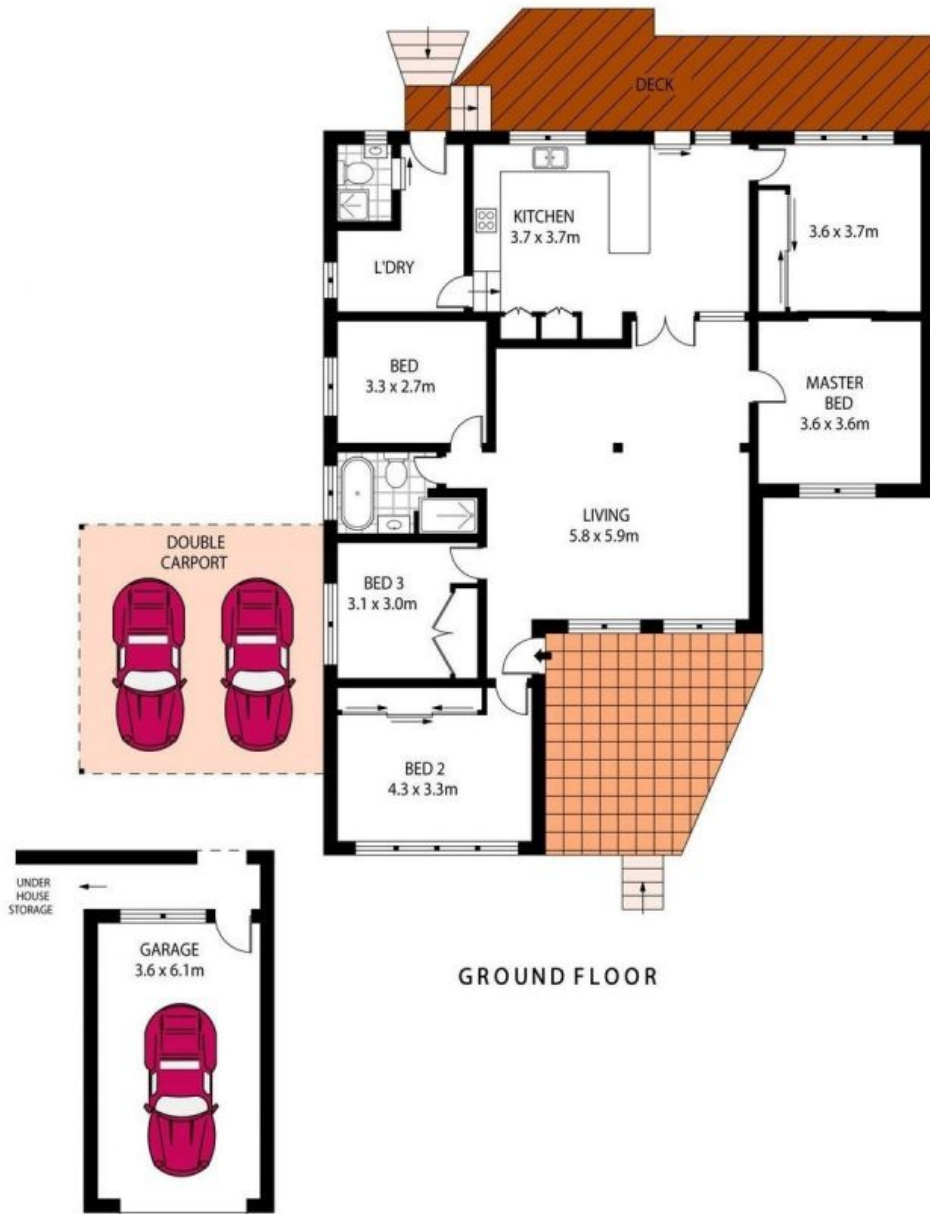


1

Renovated Home

- Large open-plan layout with multiple living areas and dining zones with split-system air-conditioning
- Open-plan kitchen with a new oven & stove top and a peaceful outlook over the backyard
- Five spacious bedrooms, three with built-in wardrobes
- Renovated main bathroom includes a separate bath and shower
- Freshly painted walls throughout and hardwood timber flooring
- Covered decked area flows off kitchen and dining area
- Large backyard with mature trees, grassed yard and an in-ground pool
- One car space under carport and a single lock-up garage
- Internal laundry with additional shower & toilet
- Approximately 400m to Miranda train station and Westfield Miranda
- Located in a great cul-de-sac in a quiet, convenient neighbourhood

Price: \$1000 pw



LOWER GROUND FLOOR

GROUND FLOOR



PLANS SHOWN ONLY INDICATIVE OF LAYOUT. DIMENSIONS ARE APPROXIMATE.
Floor plans by www.remaustralia.com
Ref. No. 12570

12 FLETCHER AVENUE

MIRANDA