



47d/5-29 Wandella Road Miranda, NSW



## Rooftop Penthouse

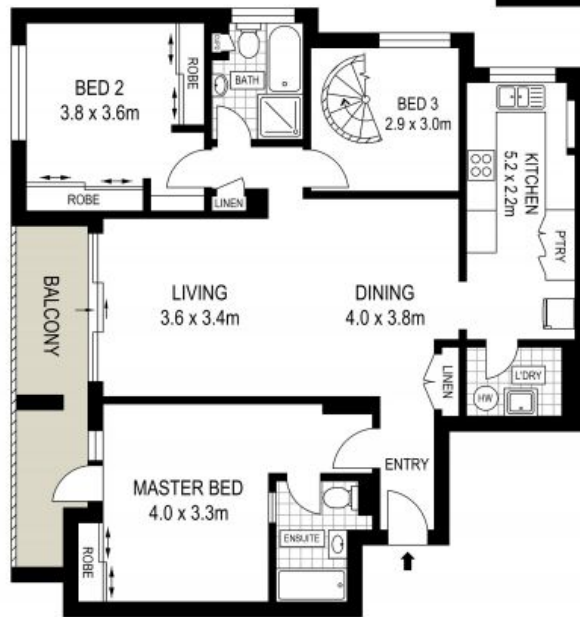
- Grand upstairs entertaining media room, leading to an outdoor terrace
- Designer elegance including floating timber floors throughout
- Multiple light-filled windows perfectly capturing the entire Miranda skyline
- Entertainers kitchen with stylish dining counter area
- Master retreat enjoys ensuite, with all bedrooms featuring built-in robes
- Full sized bathroom with bath and shower
- Double lock up garage with lift access, plus secure storage area
- Resort complex with multiple pools, saunas and manicured grounds
- Easy access to playing fields, schools, transport and Westfield Miranda

**Price:** \$850,000 - \$935,000

**Council Rates:** \$344.00 p/q

**Water Rates:** \$110.00 p/q

**Strata Rates:** \$1,733.26 p/q



**LEVEL EIGHT**

ADDRESS:  
47D/5-29 Wandella Road, Miranda



DISCLAIMER: THIS IS FOR ILLUSTRATIVE PURPOSES ONLY, ALL DIMENSIONS ARE APPROXIMATE AND IT DOES NOT CONSTITUTE PART OF ANY LEGAL DOCUMENTS.