

21/11-15 Chapman Street Gymea, NSW



2



1



1

Statement Apartment

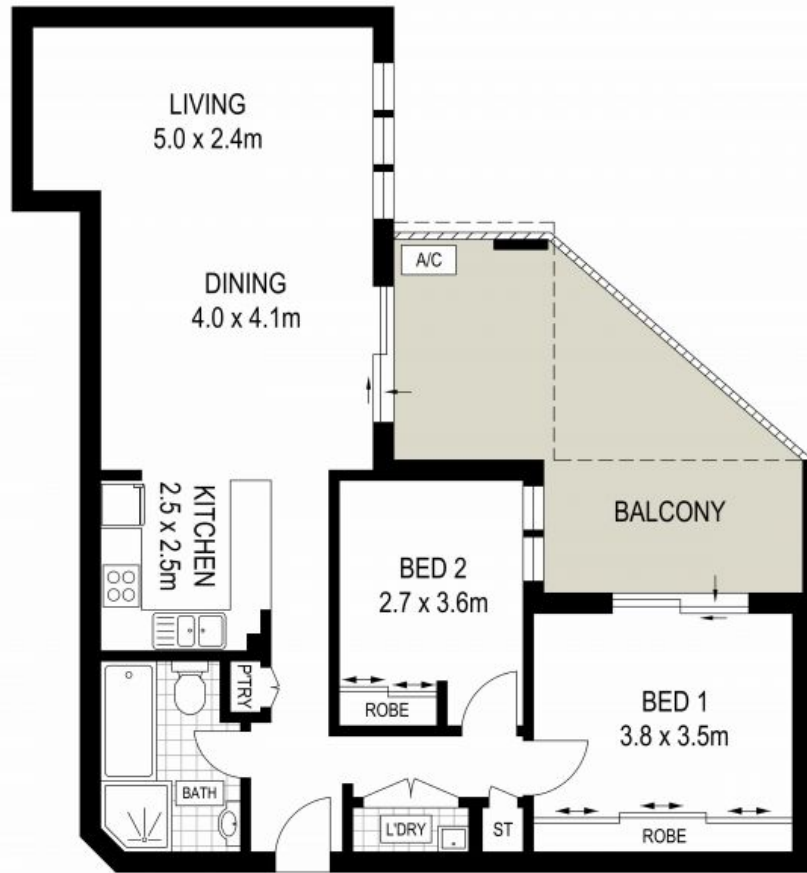
- Built by renowned builder Bezzina and set in the lavish "Corrinne" complex
- Generous master bedroom with built-in wardrobes, balcony access and leafy outlook
- Chef's open plan kitchen, with featured subway tiles and stainless appliances
- Resort-style rooftop entertaining space overlooking grassed communal area
- Internal laundry, floating timber floors, newly updated carpets, blinds and ceiling fans
- Rinnai Infinity hot water heater, video intercom system, Panasonic reverse cycle air conditioning, NBN connected and Foxtel ready
- Level and direct lift access to underground 1.5 car garage space plus storage
- Gymea train station directly across the road, moments to Gymea Village and only a short ...

Price: \$500 pw

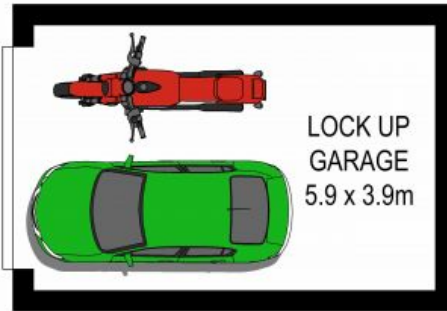
Harwood
PROPERTY AGENTS

Lucas Harwood

0431 001 001



↑
TOP FLOOR



BASEMENT

