



154B National Avenue Loftus, NSW



## Modern Living

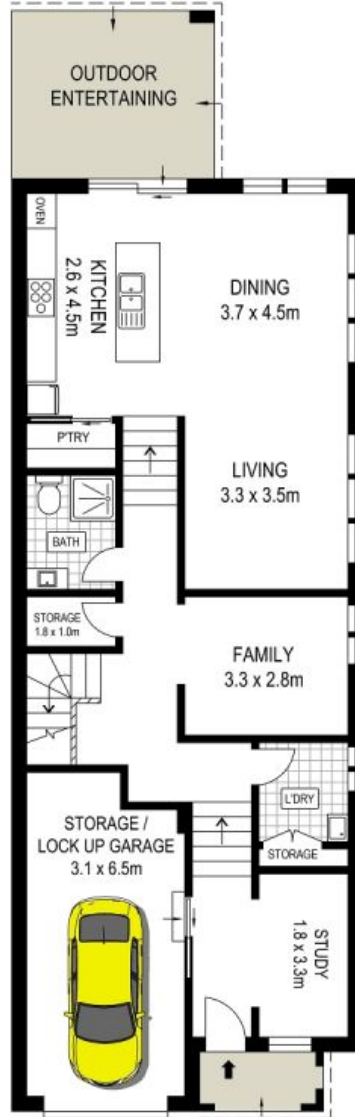
- Multi-level living offers various lifestyle options for the growing family
- Open-plan, living and dining opens out to undercover, alfresco entertaining
- The main floor offers two living areas and additional home office or study

- Gourmet gas kitchen with stone benchtops, walk-in pantry and quality stainless steel appliances
- Spacious master bedroom with stylish en-suite, walk-in wardrobe and balcony
- Zoned Daikin airconditioning, high ceilings and a Rheem touch temperature controller
- Lock up garage with automatic door opener and plenty of off-street parking

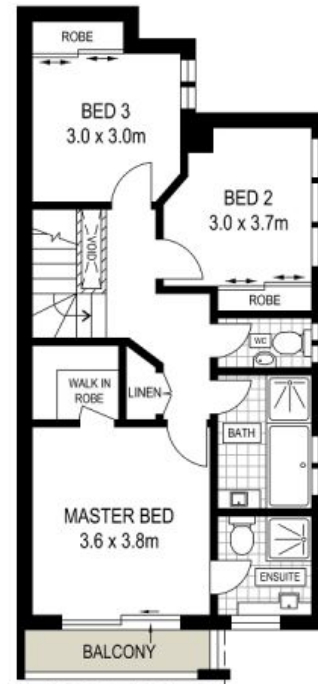
**Price:** \$780 pw



**SITE PLAN  
(NOT TO SCALE)**



**GROUND FLOOR**



**FIRST FLOOR**

ADDRESS:  
**154B National Avenue, Loftus**

DISCLAIMER: THIS IS FOR ILLUSTRATIVE PURPOSES ONLY, ALL DIMENSIONS ARE APPROXIMATE AND IT DOES NOT CONSTITUTE PART OF ANY LEGAL DOCUMENTS.

