



28 Fourth Avenue Loftus, NSW



Renovated Cottage

- Elegant facade with charming front garden and sunny porch
- Open living and dining with sweeping bush views and a north-facing aspect
- Generous kitchen with ILVE freestanding oven, gas cooktop and stone benchtops
- Spacious master bedroom with built-in wardrobes and gorgeous views
- Generous additional bedrooms, second bedroom with walk-in wardrobe
- Renovated bathroom with separate bath and shower
- Impressive entertainers deck with covered pergola and privacy screen
- Expansive backyard with sizeable shed for storage
- 900m (approx) to Loftus Public School, 800m(approx) to Loftus train station and within walking distance to Loftus and Sutherland's various amenities

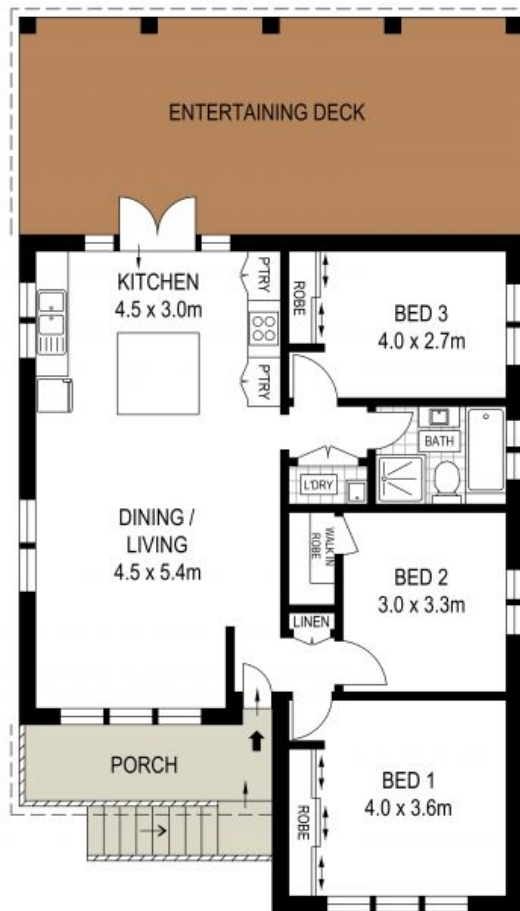
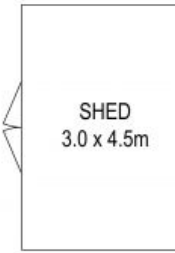
Price: \$1020000

Council Rates: \$458.00 p/q

Water Rates: \$230.00 p/q



**SITE PLAN
(NOT TO SCALE)**



GROUND FLOOR

ADDRESS:
28 Fourth Avenue, Loftus



DISCLAIMER: THIS IS FOR ILLUSTRATIVE PURPOSES ONLY, ALL DIMENSIONS ARE APPROXIMATE AND IT DOES NOT CONSTITUTE PART OF ANY LEGAL DOCUMENTS.