



16/2 Wollybutt Road Engadine, NSW



Designer Townhouse

- Open plan living and dining area enjoys an easy outdoor flow
- Entertaining deck set amid relaxing surrounds and gardens
- The well-appointed kitchen overlooks the child-friendly level lawn
- Double bedrooms include built-ins, two capture leafy outlooks
- Master bedroom equipped with an ensuite, guest powder room
- Well presented bathroom complete with separate bath and shower
- Additional toilet downstairs for increased convenience
- Pet-friendly, air conditioning, ceiling fans, gas heating
- Secure gated intercom entry, internal laundry plus storage
- 3.1kwh solar system installed on the roof which decreases electricity bills
- Internal access to double lock-up garage plus visitor parking
- Convenient to schools, parks, shops, dining and transport

Price: \$805000

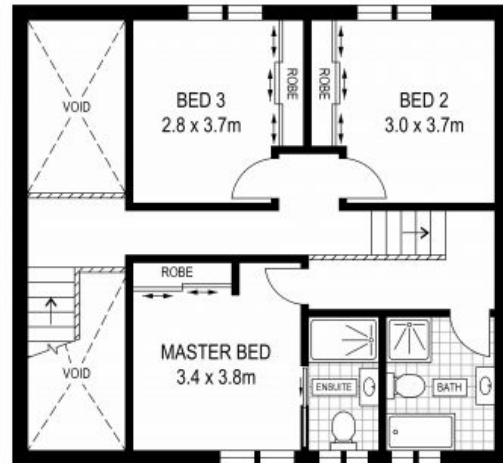
Council Rates: \$350.00 p/q

Water Rates: \$313.92 p/q

Strata Rates: \$821.90 p/q



GROUND FLOOR



FIRST FLOOR

ADDRESS:
16/2 Wollybutt Road, Engadine

DISCLAIMER: THIS IS FOR ILLUSTRATIVE PURPOSES ONLY, ALL DIMENSIONS ARE APPROXIMATE AND IT DOES NOT CONSTITUTE PART OF ANY LEGAL DOCUMENTS.

