

103A Wyralla Road Miranda, NSW



4



3



1

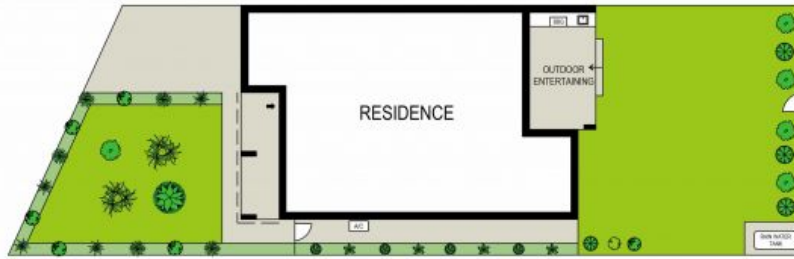
Premium Duplex

- Quality finishes and a contemporary colour scheme throughout
- Light-filled living room looks out onto sunny outdoor entertaining
- Well-appointed kitchen with 40m Ceasarstone benchtops, Bosch integrated dishwasher and gas cooking
- Three first floor bedrooms, all with balcony access and master with ensuite and walk-in wardrobe
- Convenient 4th bedroom on the ground level perfect for guestroom or home office
- Elegant bathroom downstairs with shower and floor to ceiling tiles
- Family bathroom with stylish spa bath, and separate shower
- Sunny, north-facing alfresco entertaining area, with level, grassed rear yard
- Ducted air conditioning, CCTV, alarm and video intercom

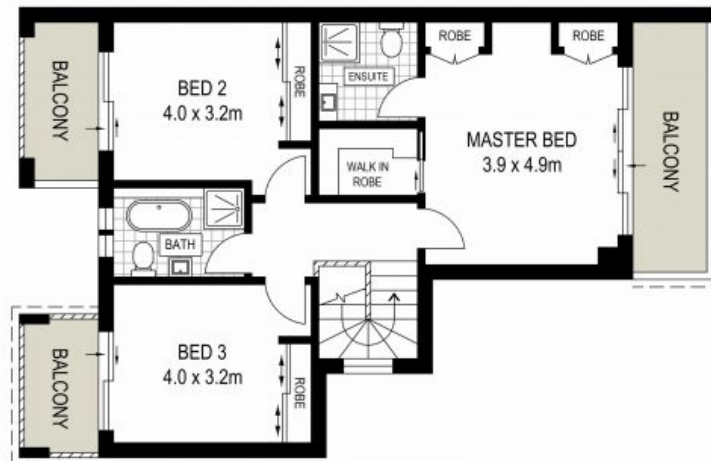
Price: \$1,300,000 - \$1,430,000

Council Rates: \$342.00 p/q

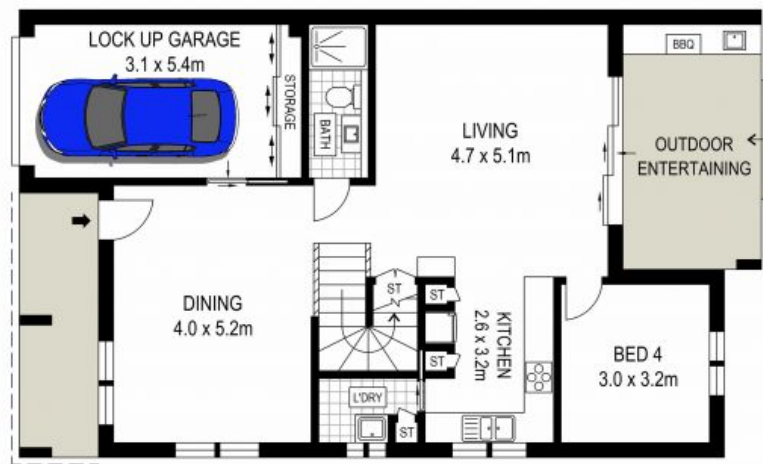
Water Rates: \$170.00 p/q



SITE PLAN (NOT TO SCALE)

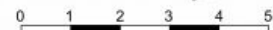


FIRST FLOOR



GROUND FLOOR

ADDRESS:
103A Wyralla Road, Miranda



DISCLAIMER: THIS IS FOR ILLUSTRATIVE PURPOSES ONLY, ALL DIMENSIONS ARE APPROXIMATE AND IT DOES NOT CONSTITUTE PART OF ANY LEGAL DOCUMENTS.