



10/28 Kiora Road Miranda, NSW



2



1



2

Spacious Convenience

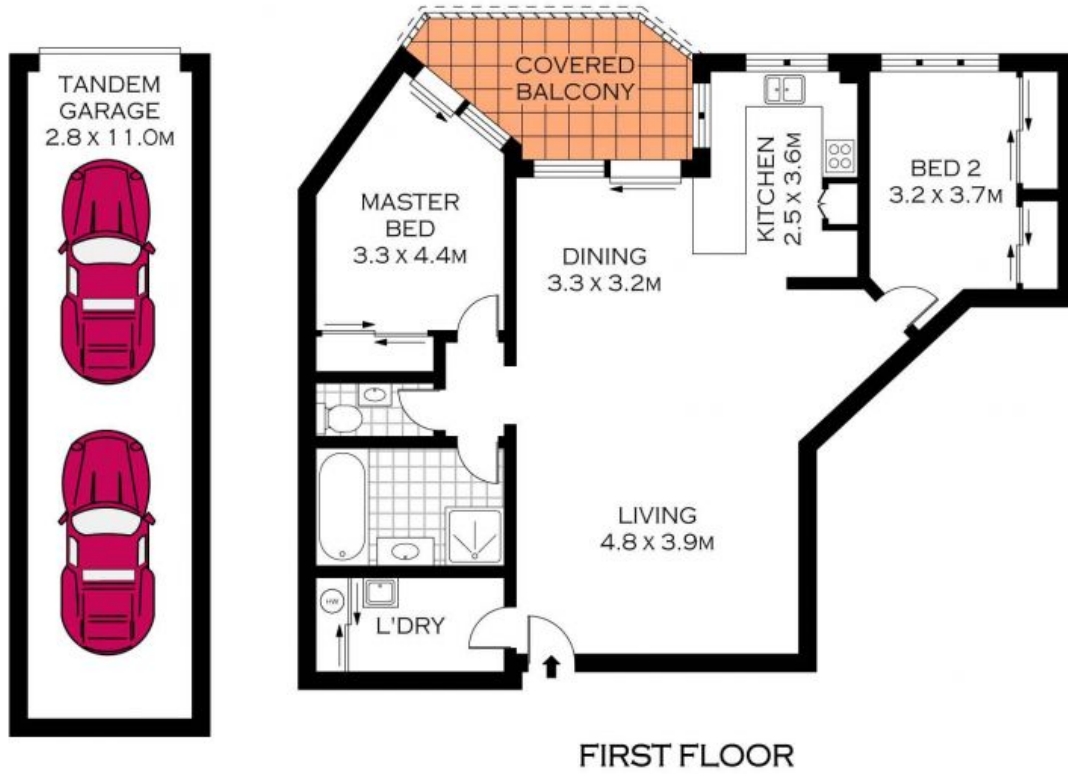
- Large open-plan living and dining zones with air-conditioning
- Generous kitchen with ample storage space and a tranquil outlook
- Spacious bedrooms with large built-in wardrobes, main with access to the balcony
- Generous main bathroom with separate bath and shower, w/c adjacent
- Expansive balcony with a private and leafy outlook, ideal for entertaining
- Ceiling fans in bedrooms and living/dining room, freshly painted throughout
- Large internal laundry with convenient shelving and ample storage space
- Secure, solid brick tandem lock-up garage with additional storage space
- Boutique, secure complex of just 16 apartments with internal access to the garage
- Split system air conditioning

Price: \$460

Harwood
PROPERTY AGENTS

Deanna Stannard

0415 427 661



INT : 93.00M²



PLANS SHOWN ONLY INDICATIVE OF LAYOUT. DIMENSIONS ARE APPROXIMATE.
Floor plans by www.remaustralia.com
Ref. No: 12560

Harwood
PROPERTY AGENTS

10/28 KIORA ROAD

MIRANDA

10/28 Kiora Road

Miranda, NSW

Harwood
PROPERTY AGENTS