



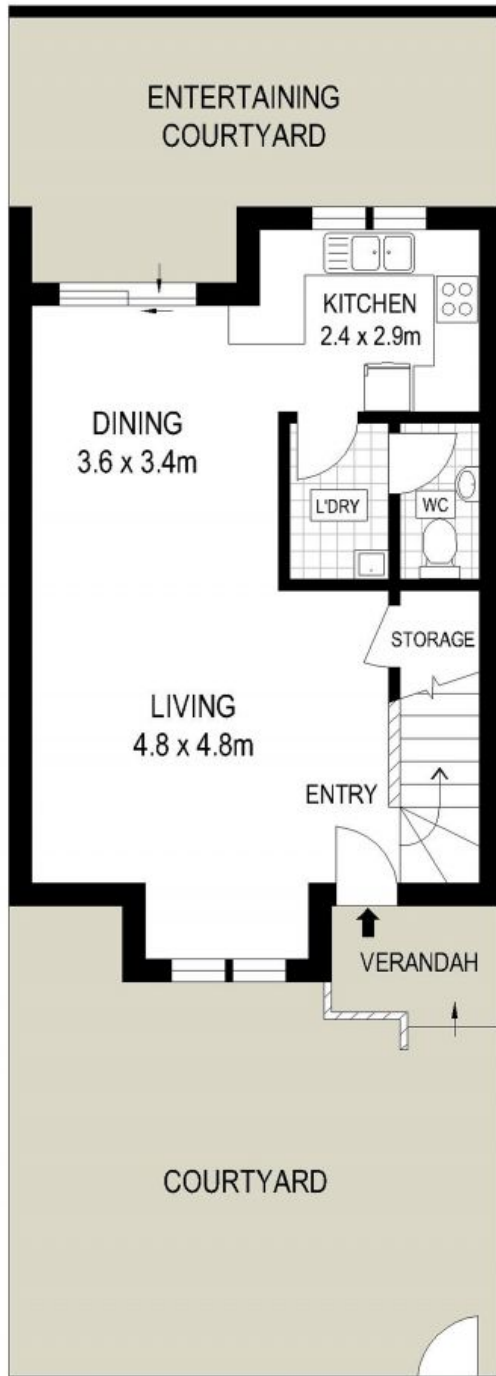
2/236 The Boulevard Miranda, NSW



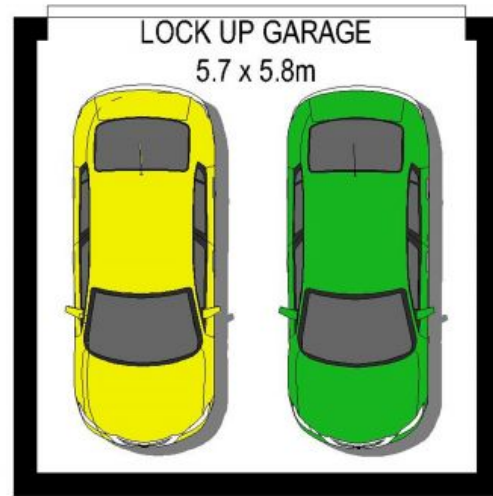
Family Townhouse

- Charming brick facade with a private, spacious front courtyard
- Open plan living and dining flows onto a peaceful terracotta tiled courtyard
- Gas kitchen equipped with stone bench tops and stainless steel appliances
- Master bedroom with ensuite, built-in wardrobes and a leafy outlook
- Additional bedrooms well-sized, featuring mirrored built-in wardrobes
- Grand main bathroom featuring a separate bath and shower
- Fully tiled internal laundry with a convenient, third w/c
- Low maintenance timber-look flooring, air-conditioning and ceiling fans
- Ample storage throughout the home and a secure, double lock-up garage
- 850 m from Westfield Miranda and 1.1 km from Miranda Public School (approx.)

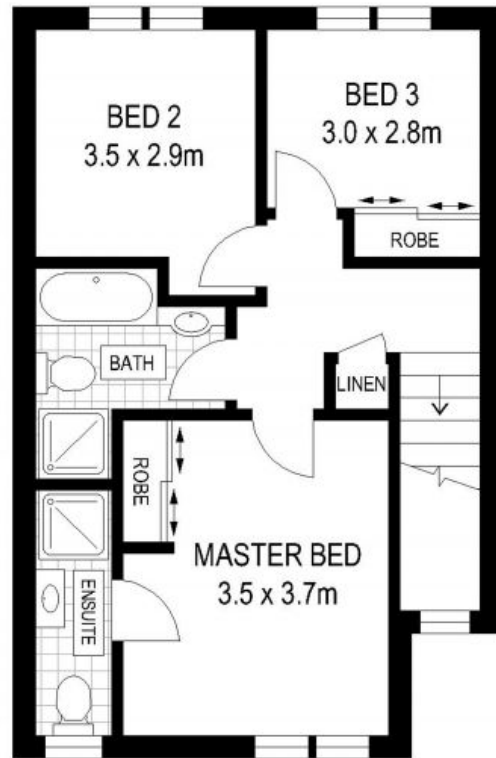
Price: \$580



GROUND FLOOR



BASEMENT



FIRST FLOOR

ADDRESS:
2 / 236 The Boulevard, MIRANDA

DISCLAIMER: THIS IS FOR ILLUSTRATIVE PURPOSES ONLY, ALL DIMENSIONS ARE APPROXIMATE AND IT DOES NOT CONSTITUTE PART OF ANY LEGAL DOCUMENTS.

