



504/16 Pinnacle Street Miranda, NSW



1



1



1

Perfect Investment

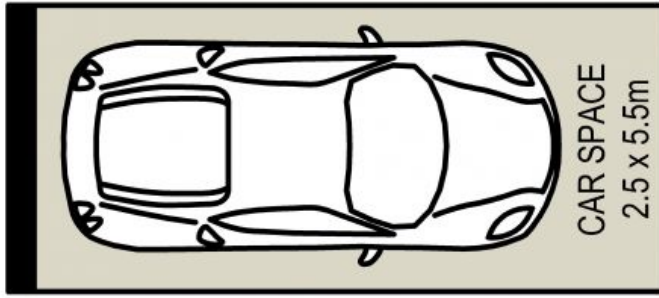
- Spacious open plan living and dining area flowing onto a private balcony
- Tranquil living area offers ample sunlight and features a convenient study nook
- Sleek gas kitchen with quality SMEG appliances and Caesarstone benchtops
- Generously proportioned master bedroom equipped with built-in wardrobes
- High-end, contemporary bathroom with spacious shower and elegant fixtures
- Spacious balcony with stunning city views flowing off living and kitchen
- Convenient internal laundry, air-conditioning, intercom and roller blinds throughout
- Communal areas include landscaped gardens with BBQs, ideal for entertaining

Price: \$480000

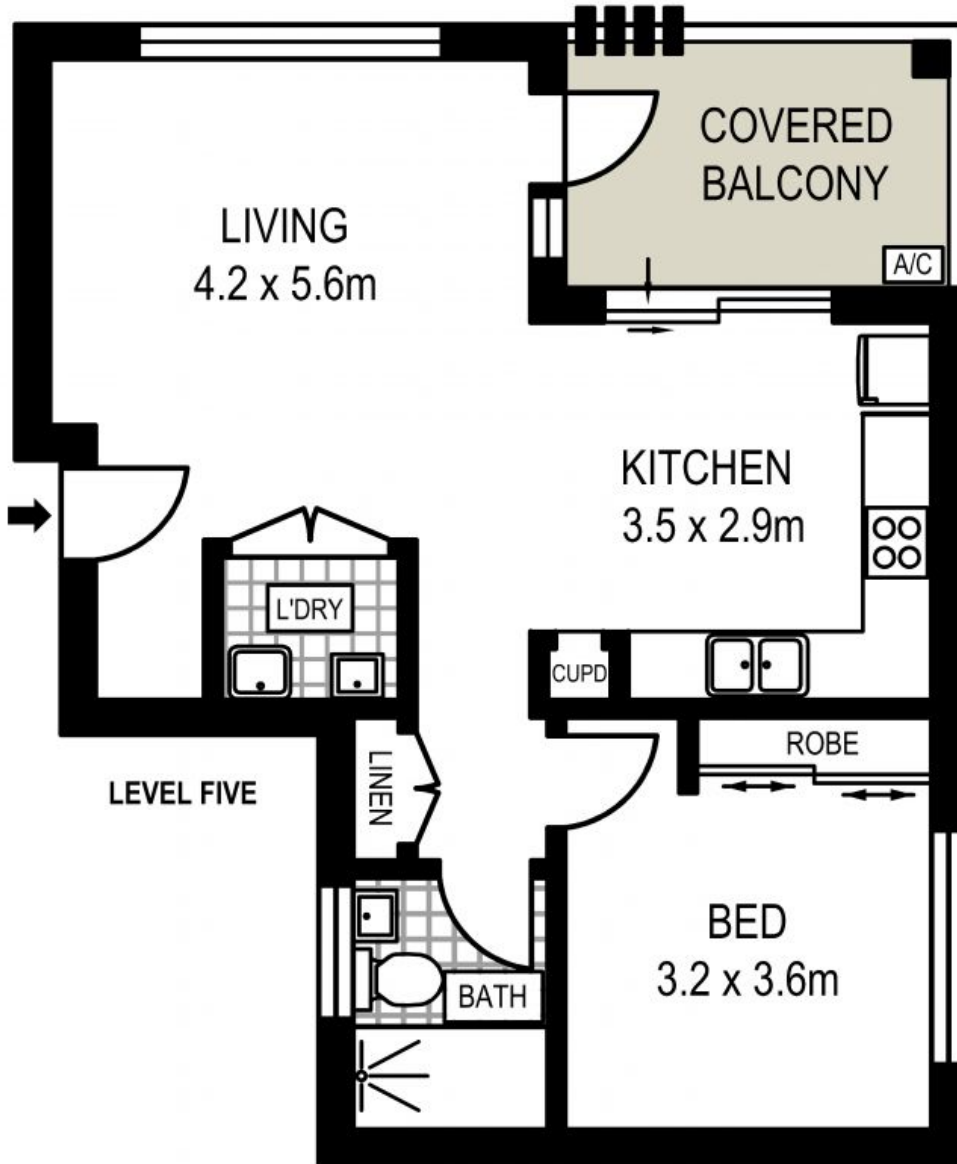
Council Rates: \$205.30 p/q

Water Rates: \$176.04 p/q

Strata Rates: \$774.35 p/q



BASEMENT THREE



ADDRESS: 504 / 16 Pinnacle Street, MIRANDA



DISCLAIMER: THIS IS FOR ILLUSTRATIVE PURPOSES ONLY, ALL DIMENSIONS ARE APPROXIMATE AND IT DOES NOT CONSTITUTE PART OF ANY LEGAL DOCUMENTS.