



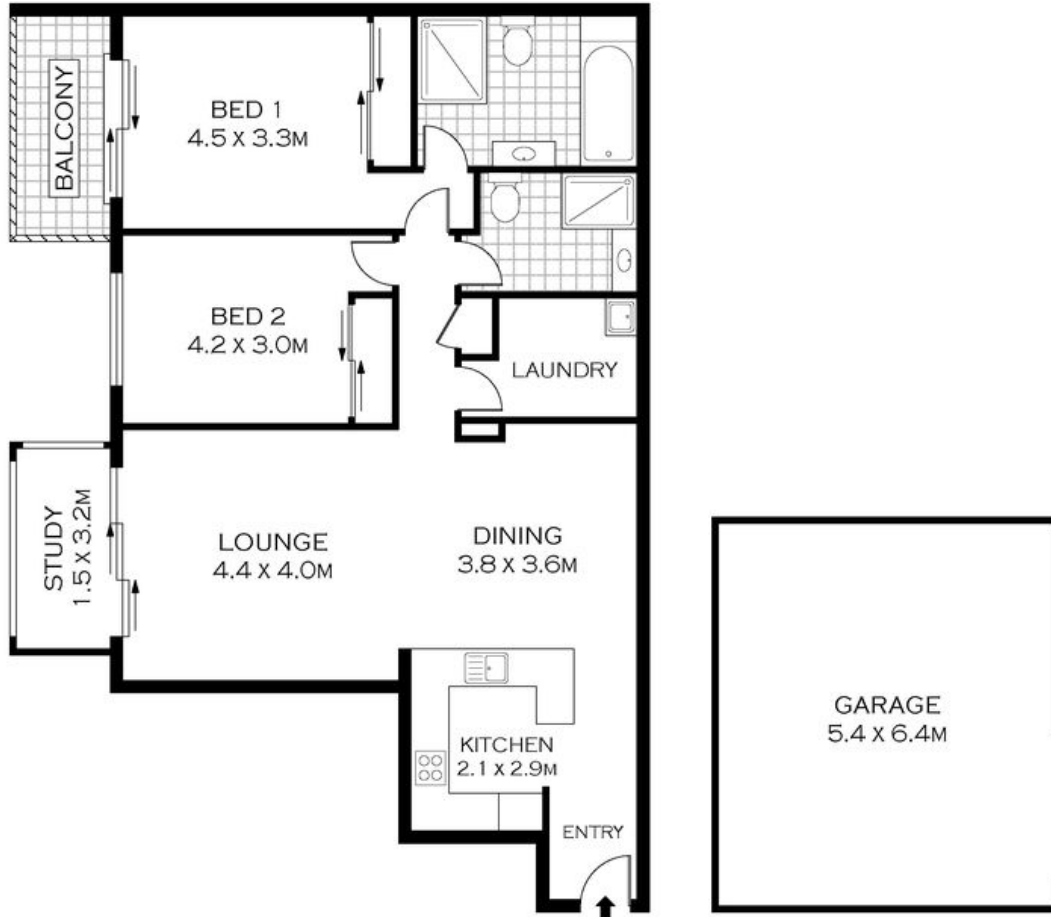
110/8-14 Willock Avenue Miranda, NSW



Modern 2 bedroom unit with extra study

- Open plan living with timber floors throughout, separate study
- New kitchen with 40mm granite benchtops, European appliances, gas cooking and dishwasher
- Huge master bedroom with full size ensuite, and balcony
- High ceiling, three step cornices, air conditioning
- Level security entrance via landscaped walkway
- Lift access to the 9th floor, secure double garage sized garage (parking for 1 car only), pool, gym and BBQ area
- Metres from Westfield Miranda, schools, transport and hospital

Price: \$550 Per Week



LEVEL NINE

INT : 97.10M²



PLANS SHOWN ONLY INDICATIVE OF LAYOUT. DIMENSIONS ARE APPROXIMATE.
Floor plans by www.realestatemarketingaustralia.com.au
Ref. No: 8919

110/8-14 WILLOCK AVENUE

MIRANDA