

19 Patterson Road Heathcote, NSW



3



1



1

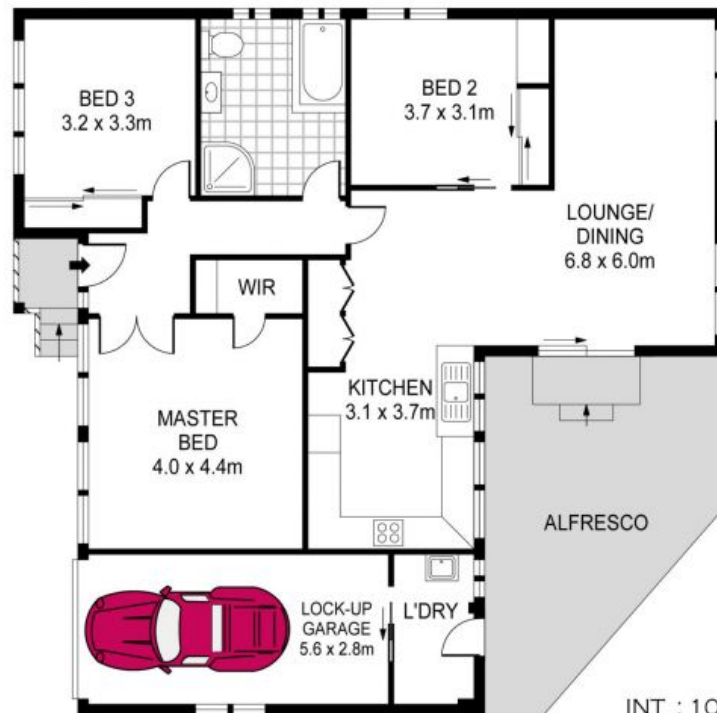
## Recently Renovated

- Open-plan living flows onto a superb covered outdoor entertaining area
- Single level living with bright, open interiors and lush, leafy views
- Modern kitchen with gas cooktop, stone benchtops, breaky bench, stainless steel appliances and servery window
- Oversized main bedroom with walk-in wardrobe and peaceful aspect
- Two well-proportioned bedrooms fitted with built-in wardrobes and a study nook
- Updated throughout with tiled flooring, skylights, ceiling fans and a/c
- Immaculate, well-scaled bathroom with separate bath and shower
- Large and secure landscaped grassed yard with elevated panoramic views
- Single lock-up garage with driveway parking and additional garden shed storage.

**Price:** \$650



**SITE PLAN**  
(NOT TO SCALE)



INT : 103.41M<sup>2</sup>



PLANS SHOWN ONLY INDICATIVE OF LAYOUT. DIMENSIONS ARE APPROXIMATE.  
Floor plans by www.remaustralia.com  
Ref. No. 12829

19 PATTERSON ROAD

HEATHCOTE