



10/28 Kiora Road Miranda, NSW

 2  1  2

Spacious Convenience

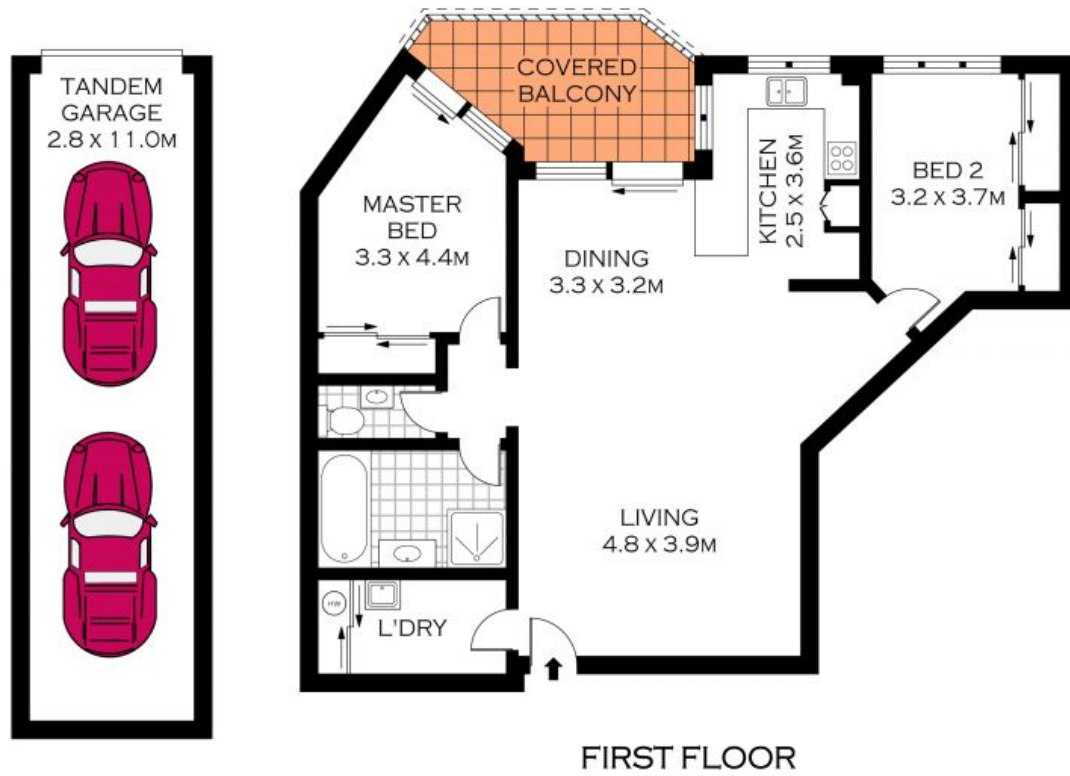
- Large open-plan living and dining zones lead onto a large, leafy balcony
- Generous kitchen with ample storage space and a tranquil outlook
- Spacious bedrooms with large built-in wardrobes, main with access to the balcony
- Generous main bathroom with separate bath and shower, w/c adjacent
- Expansive balcony with a private and leafy outlook, ideal for entertaining
- Ceiling fans in bedrooms and living/dining room, freshly painted throughout
- Large internal laundry with convenient shelving and ample storage space
- Secure, solid brick tandem lock-up garage with additional storage space
- Boutique, secure complex of just 16 apartments with internal access to the garage

Price: \$680000

Harwood
PROPERTY AGENTS

Lucas Harwood

0431 001 001



0 1 2 3 5
SCALE (METRES)

PLANS SHOWN ONLY INDICATIVE OF LAYOUT. DIMENSIONS ARE APPROXIMATE.
Floor plans by www.remaustralia.com
Ref. No: 12660

Harwood
PROPERTY AGENTS

10/28 KIORA ROAD

MIRANDA

10/28 Kiora Road

Miranda, NSW

Harwood
PROPERTY AGENTS