



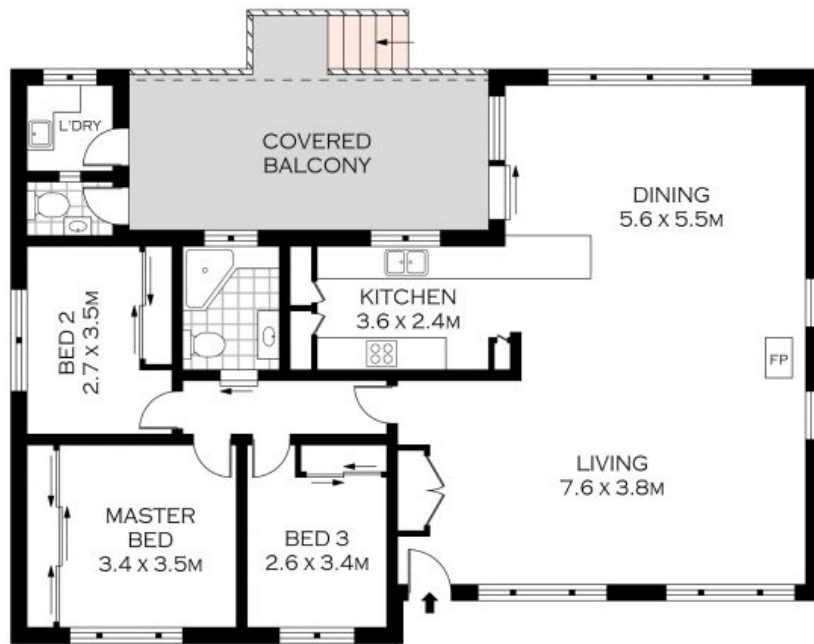
27 Wollybutt Road Engadine, NSW



Immaculate Home

- Positioned in a premier family location with an expansive reserve directly opposite
- Open plan living/dining is light-filled and spacious, enhanced with skylights throughout
- Modern stone kitchen with breakfast bar and quality stainless steel appliances
- Generous bedrooms all well-equipped with built-in wardrobes
- Spacious bathroom is tiled floor-to-ceiling and presents spa bath and shower
- Blackbutt timber flooring, plantation shutters, air-conditioning and gas fireplace
- Landscaped, mature gardens including vibrant citrus trees and garden shed

Price: \$905000



GROUND FLOOR

INT : 118.31M²



PLANS SHOWN ONLY INDICATIVE OF LAYOUT. DIMENSIONS ARE APPROXIMATE.
Floor plans by www.remaustralia.com
Ref. No. 12639

Harwood
PROPERTY AGENTS

27 WOLLYBUTT ROAD

ENGADINE

27 Wollybutt Road

Engadine, NSW

Harwood
PROPERTY AGENTS