



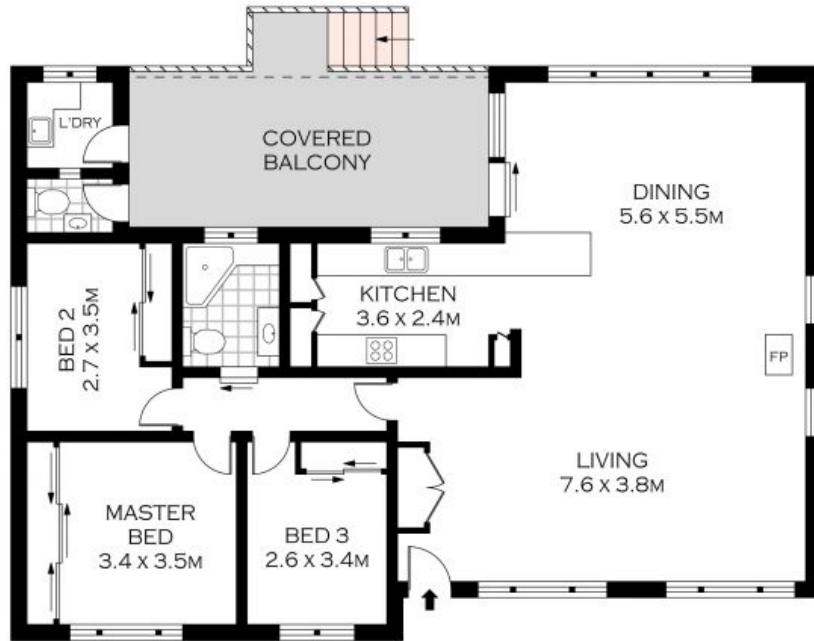
27 Wollybutt Road Engadine, NSW



Immaculate Home

- Positioned in a premier family location with an expansive reserve directly opposite
- Open plan living/dining is light-filled and spacious, enhanced with skylights throughout
- Modern stone kitchen with breakfast bar and quality stainless steel appliances
- Generous bedrooms all well-equipped with built-in wardrobes
- Spacious bathroom is tiled floor-to-ceiling and presents spa bath and shower
- Blackbutt timber flooring, plantation shutters, air-conditioning and gas fireplace
- Landscaped, mature gardens including vibrant citrus trees and garden shed

Price: \$905000



GROUND FLOOR

INT : 118.31M²



PLANS SHOWN ONLY INDICATIVE OF LAYOUT. DIMENSIONS ARE APPROXIMATE.
Floor plans by www.remaustralia.com
Ref. No. 12639

Harwood
PROPERTY AGENTS

27 WOLLYBUTT ROAD

ENGADINE