



6/30 Belmont Street Sutherland, NSW



2



2



1

Superior Living

- Generous open-plan living and dining
- Oversized bedrooms, both complete with built-ins, master with ensuite
- Neat and tidy bathroom with separate shower and bath
- Private entertainers terrace
- Lock-up garage, well-maintained security block with lift access
- Convenience of a separate internal laundry
- Kitchen with plenty of bench and cupboard space

Price: \$675000

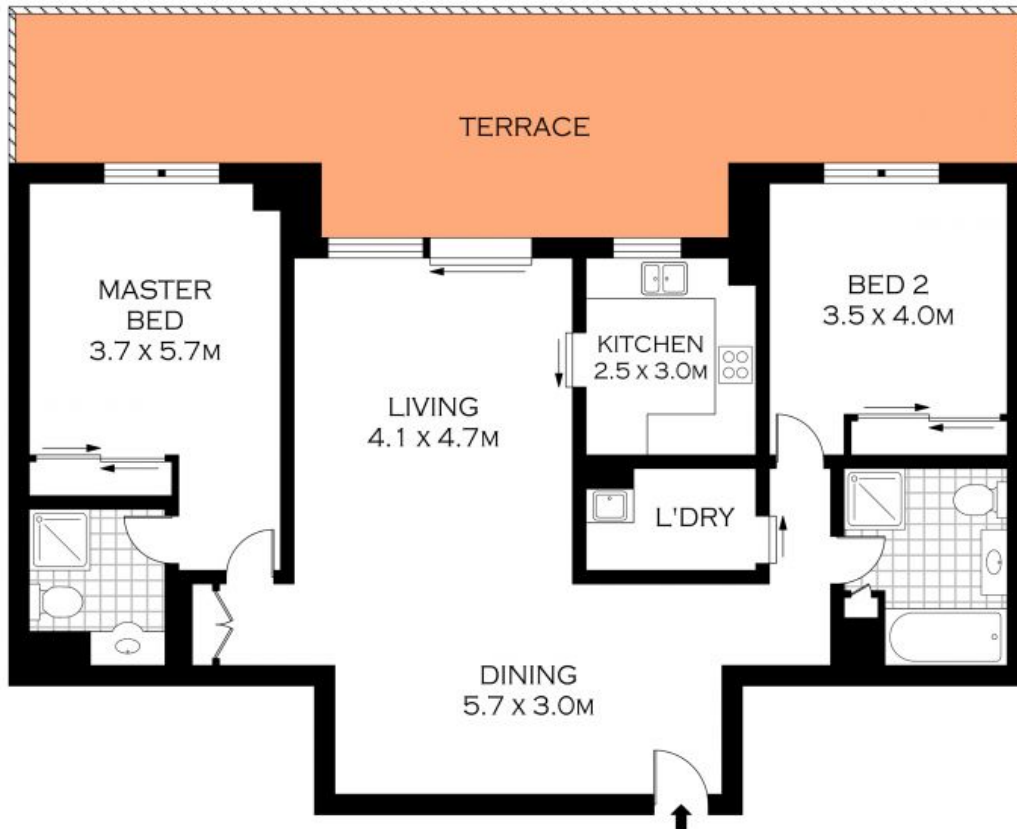
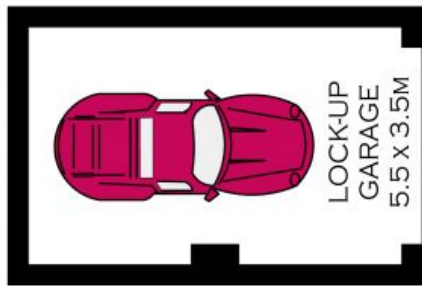
Harwood
PROPERTY AGENTS

Lucas Harwood

0431 001 001

Lucas Harwood

0431 001 001



INT : 105.15M²



PLANS SHOWN ONLY INDICATIVE OF LAYOUT. DIMENSIONS ARE APPROXIMATE.
Floor plans by www.remaustralia.com
Ref. No. 12602

Harwood
PROPERTY AGENTS

6/30 BELMONT STREET

SUTHERLAND

6/30 Belmont Street

Sutherland, NSW

Harwood
PROPERTY AGENTS