



6a Highview Crescent Oyster Bay, NSW



3



1

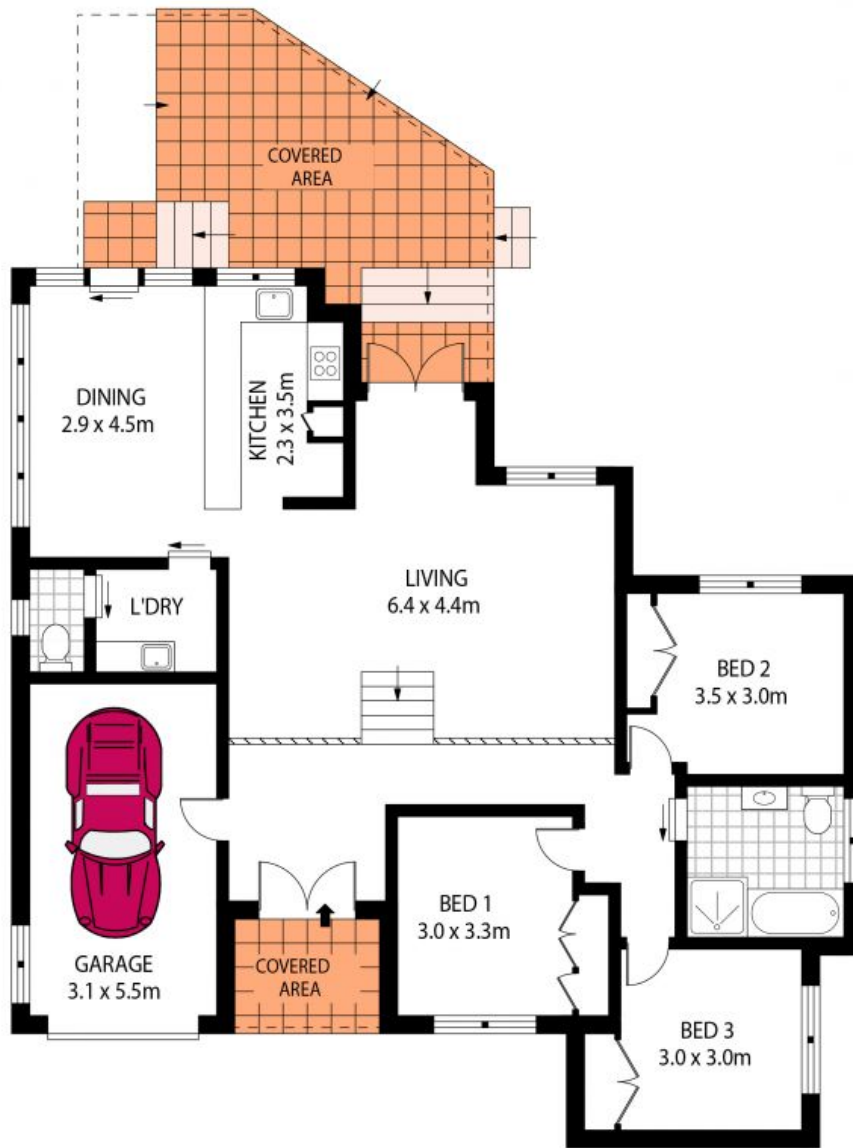


1

Modern home

- ? Freestanding home with a steel frame construction and spacious layout
- ? Dining and lounge zones with reverse cycle air conditioning and downlights
- ? Sleek kitchen with stone features, stainless steel appliances and dishwasher
- ? All bright and airy bedrooms contain convenient built-in wardrobes
- ? High ceilings, ceiling fans, two gas heating outlets, and solar electricity
- ? A chic neutral colour palette with timber flooring and quality travertine tiles
- ? Fully-tiled bathroom with quality finishes and separate laundry with second toilet
- ? Undercover alfresco entertaining area overlooking sun-drenched, fully-fenced lawn

Price: \$998000



GROUND FLOOR

INT : 132.07m²



PLANS SHOWN ONLY INDICATIVE OF LAYOUT. DIMENSIONS ARE APPROXIMATE.
Floor plans by www.remaustralia.com
Ref. No: 12510

6A HIGHVIEW CRESCENT

OYSTER BAY