



11 Binda Road Yowie Bay, NSW



4



2

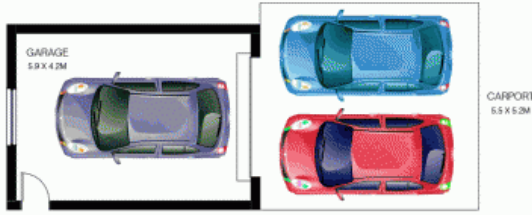


3

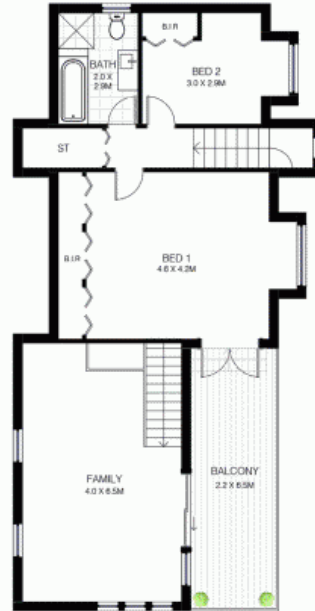
Deep Waterfront

- Set on an expansive 935.8sqm (approx.) block in a highly regarded deep waterfront location
- Multiple living zones spread across two levels both with covered entertainer's balconies
- Elegant kitchen with stone bench tops, pyrolytic oven, soft-close drawers and cupboards
- Elevated upstairs family room with glistening bay water views from an entertainer's balcony
- Grand master bedroom with bay views, three of four bedrooms with built in wardrobes
- Spacious main bathroom on upper level provides both bath and shower facilities
- Ten solar panels on the roof, produce a pleasant reduction on energy expenses

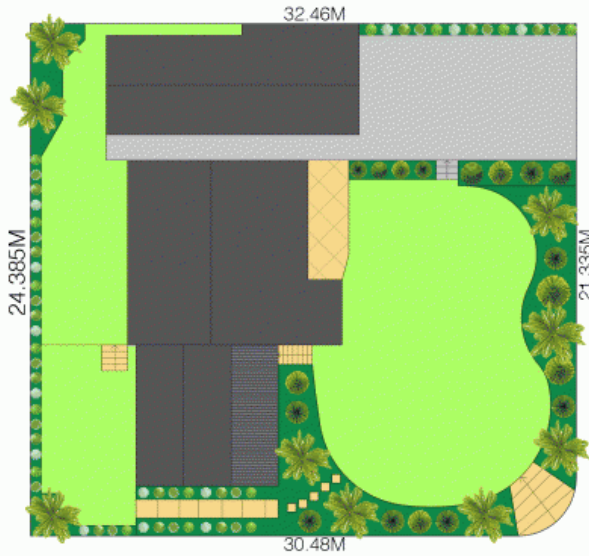
Price: \$2,200,000 - \$2,420,000



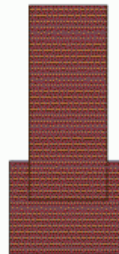
GROUND FLOOR



FIRST FLOOR



POINTEON AND JETTY ONTO
YOWIE BAY



GROUND FLOOR = APPROX. 96.2M²
FIRST FLOOR = APPROX. 73.4M²
GARAGE = APPROX. 24.8M²
SITE AREA = APPROX. 935.8M²

DISCLAIMER: THIS IS FOR ILLUSTRATIVE PURPOSES ONLY. ALL DIMENSIONS ARE APPROXIMATE AND IT DOES NOT CONSTITUTE PART OF ANY LEGAL DOCUMENTS.

Harwood
PROPERTY AGENTS

11 BINDA ROAD

YOWIE BAY