



4/11-15 Kiora Road Miranda, NSW



2



1

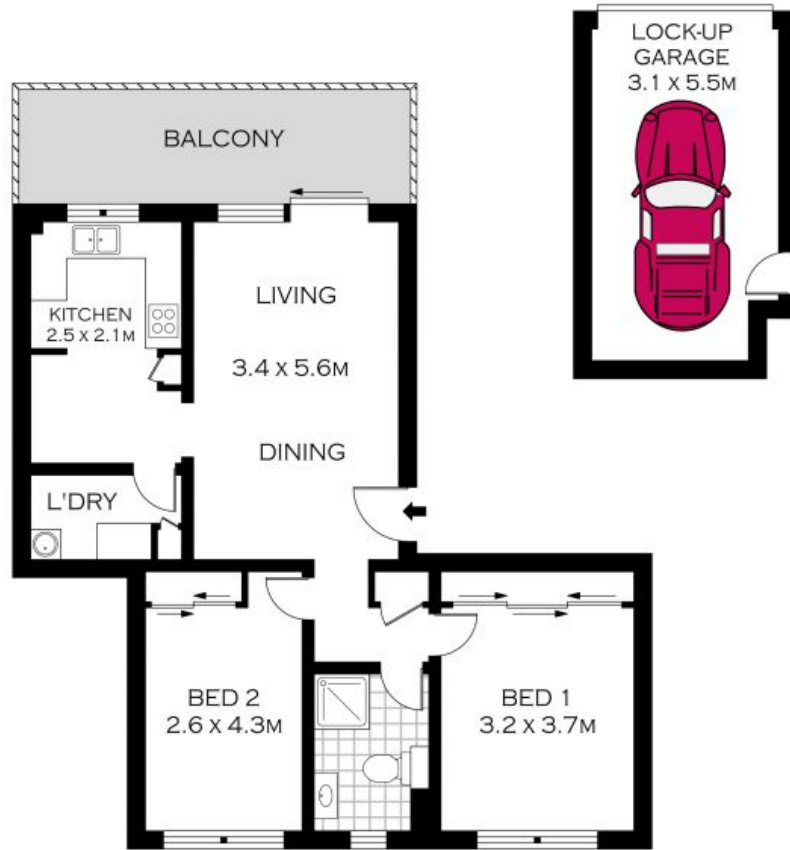


1

Chic Renovation

- Updated apartment with a chic colour pallet, a/c and timber-look flooring
- Light-filled living room flows out onto a spacious entertainer's balcony
- Kitchen with gas cooking and stainless steel appliances and ample storage
- Generous bedrooms with built-in wardrobes and bright, breezy views
- On-trend bathroom with elegant frameless shower and feature floor tiles
- Secure lock-up internal garage in a well-maintained complex
- Metres to various public transport options, with a bus stop conveniently placed nearby the front of the complex.

Price: \$650000



SECOND FLOOR



NOTE : LOCK-UP GARAGE WITH INTERNAL ACCESS

INT : 69.79M²



PLANS SHOWN ONLY INDICATIVE OF LAYOUT. DIMENSIONS ARE APPROXIMATE
Floor plans by www.remaustralia.com
Ref No: 12096